

Anti-Phospho-FOXO4-Thr451 antibody (417-466 aa) (STJ90542)

STJ90542

GENERAL INFORMATION

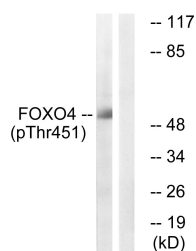
| | |
|--------------------------|--|
| Product Type | Primary antibodies |
| Short Description | Rabbit polyclonal antibody anti-Phospho-Forkhead box protein O4-Thr451 (417-466 aa) is suitable for use in Western Blot and ELISA research applications. |
| Applications | WB/ELISA |
| Host/Source | Rabbit |
| Reactivity | Human/Mouse |

PRODUCT PROPERTIES

| | |
|-----------------------|---|
| Clonality | Polyclonal |
| Clone ID | |
| Concentration | 1 mg/mL |
| Conjugation | Unconjugated |
| Purification | The antibody was affinity-purified from rabbit antiserum by affinity-chromatography using epitope-specific immunogen. |
| Dilution Range | WB 1:500-1:2000 ELISA 1:40000 |
| Formulation | Liquid in PBS containing 50% Glycerol, 0.5% BSA and 0.02% Sodium Azide. |
| Isotype | IgG |
| Storage | Store at -20°C for up to 1 year from the date of receipt, and avoid repeat freeze-thaw cycles. |
| Instruction | |

TARGET INFORMATION

| | |
|---------------------------|---|
| Gene ID | 4303 |
| Gene Symbol | FOXO4 |
| Uniprot ID | FOXO4_HUMAN |
| Immunogen | The antiserum was produced against synthesized peptide derived from the human FOXO4 around the phosphorylation site of Thr451 at the amino acid range 417-466 |
| Immunogen Region | 417-466 aa |
| Specificity | Phospho-FoxO4 (T451) Polyclonal Antibody detects endogenous levels of FoxO4 protein only when phosphorylated at T451. |
| Immunogen Sequence | |



Western blot analysis of lysates from HUVEC cells treated with EGF 200ng/ml 5', using FOXO4 (Phospho-Thr451) Antibody. The lane on the right is blocked with the phospho peptide.