

Anti-Phospho-NOS3-Ser615 antibody (581-630 aa) (STJ90541)

STJ90541

GENERAL INFORMATION

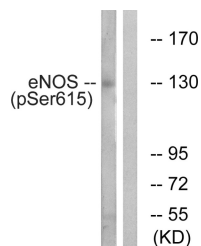
Product Type	Primary antibodies
Short Description	Rabbit polyclonal antibody anti-Phospho-Nitric oxide synthase 3-Ser615 (581-630 aa) is suitable for use in Western Blot and ELISA research applications.
Applications	WB/ELISA
Host/Source	Rabbit
Reactivity	Human/Mouse/Rat

PRODUCT PROPERTIES

Clonality	Polyclonal
Clone ID	
Concentration	1 mg/mL
Conjugation	Unconjugated
Purification	The antibody was affinity-purified from rabbit antiserum by affinity-chromatography using epitope-specific immunogen.
Dilution Range	WB 1:500-1:2000 ELISA 1:40000
Formulation	Liquid in PBS containing 50% Glycerol, 0.5% BSA and 0.02% Sodium Azide.
Isotype	IgG
Storage	Store at -20°C for up to 1 year from the date of receipt, and avoid repeat freeze-thaw cycles.
Instruction	

TARGET INFORMATION

Gene ID	4846
Gene Symbol	NOS3
Uniprot ID	NOS3_HUMAN
Immunogen	The antiserum was produced against synthesized peptide derived from the human eNOS around the phosphorylation site of Ser615 at the amino acid range 581-630
Immunogen Region	581-630 aa
Specificity	Phospho-NOS3 (S615) Polyclonal Antibody detects endogenous levels of NOS3 protein only when phosphorylated at S615.
Immunogen Sequence	



Western blot analysis of lysates from K562 cells treated with EGF 40nM 30', using eNOS (Phospho-Ser615) Antibody. The lane on the right is blocked with the phospho peptide.