

## Anti-Phospho-CD40-Thr254 antibody (220-269 aa) (STJ90539)

STJ90539

### GENERAL INFORMATION

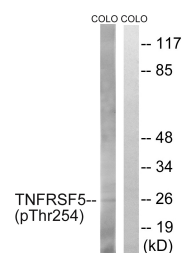
<b>Product Type</b>	Primary antibodies
<b>Short Description</b>	Rabbit polyclonal antibody anti-Phospho-Tumor necrosis factor receptor superfamily member 5-Thr254 (220-269 aa) is suitable for use in Western Blot and ELISA research applications.
<b>Applications</b>	WB/ELISA
<b>Host/Source</b>	Rabbit
<b>Reactivity</b>	Human/Mouse

### PRODUCT PROPERTIES

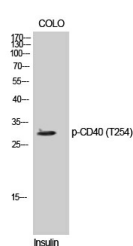
<b>Clonality</b>	Polyclonal
<b>Clone ID</b>	
<b>Concentration</b>	1 mg/mL
<b>Conjugation</b>	Unconjugated
<b>Purification</b>	The antibody was affinity-purified from rabbit antiserum by affinity-chromatography using epitope-specific immunogen.
<b>Dilution Range</b>	WB 1:500-1:2000 ELISA 1:5000
<b>Formulation</b>	Liquid in PBS containing 50% Glycerol, 0.5% BSA and 0.02% Sodium Azide.
<b>Isotype</b>	IgG
<b>Storage</b>	Store at -20°C for up to 1 year from the date of receipt, and avoid repeat freeze-thaw cycles.
<b>Instruction</b>	

### TARGET INFORMATION

<b>Gene ID</b>	958
<b>Gene Symbol</b>	CD40
<b>Uniprot ID</b>	TNRS5_HUMAN
<b>Immunogen</b>	The antiserum was produced against synthesized peptide derived from the human TNFRSF5 around the phosphorylation site of Thr254 at the amino acid range 220-269
<b>Immunogen Region</b>	220-269 aa
<b>Specificity</b>	Phospho-CD40 (T254) Polyclonal Antibody detects endogenous levels of CD40 protein only when phosphorylated at T254.
<b>Immunogen Sequence</b>	



Western blot analysis of lysates from COLO205 cells treated with Insulin 0.01U/ml 15', using TNFRSF5 (Phospho-Thr254) Antibody. The lane on the right is blocked with the phospho peptide.



Western blot analysis of COLO cells using Phospho-CD40 (T254) Polyclonal Antibody diluted at 1/1000.