

Anti-Phospho-KIF20A-Ser528 antibody (501-550 aa) (STJ90533)

STJ90533

GENERAL INFORMATION

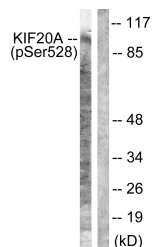
Product Type	Primary antibodies
Short Description	Rabbit polyclonal antibody anti-Phospho-Kinesin-like protein KIF20A-Ser528 (501-550 aa) is suitable for use in Western Blot, Immunohistochemistry, Immunofluorescence and ELISA research applications.
Applications	WB/IHC/IF/ELISA
Host/Source	Rabbit
Reactivity	Human/Rat/Mouse

PRODUCT PROPERTIES

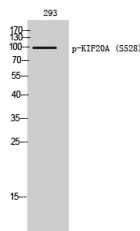
Clonality	Polyclonal
Clone ID	
Concentration	1 mg/mL
Conjugation	Unconjugated
Purification	The antibody was affinity-purified from rabbit antiserum by affinity-chromatography using epitope-specific immunogen.
Dilution	WB 1:500-1:2000
Range	IHC 1:100-1:300 ELISA 1:5000 IF 1:50-200
Formulation	Liquid in PBS containing 50% Glycerol, 0.5% BSA and 0.02% Sodium Azide.
Isotype	IgG
Storage Instruction	Store at -20°C for up to 1 year from the date of receipt, and avoid repeat freeze-thaw cycles.

TARGET INFORMATION

Gene ID	10112
Gene Symbol	KIF20A
Uniprot ID	K120A_HUMAN
Immunogen	The antiserum was produced against synthesized peptide derived from the human KIF20A around the phosphorylation site of Ser528 at the amino acid range 501-550
Immunogen Region	501-550 aa
Specificity	Phospho-KIF20A (S528) Polyclonal Antibody detects endogenous levels of KIF20A protein only when phosphorylated at S528.
Immunogen Sequence	



Western blot analysis of lysates from 293 cells, using KIF20A (Phospho-Ser528) Antibody. The lane on the right is blocked with the phospho peptide.



Western blot analysis of 293 cells using Phospho-KIF20A (S528) Polyclonal Antibody