

Anti-Phospho-SMAD3-Ser213 antibody (179-228 aa) (STJ90524)

STJ90524

GENERAL INFORMATION

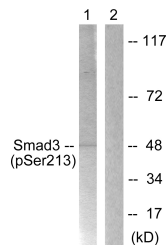
Product Type	Primary antibodies
Short Description	Rabbit polyclonal antibody anti-Phospho-Mothers against decapentaplegic homolog 3-Ser213 (179-228 aa) is suitable for use in Western Blot, Immunohistochemistry, Immunofluorescence and ELISA research applications.
Applications	WB/IHC/IF/ELISA
Host/Source	Rabbit
Reactivity	Human/Mouse/Rat

PRODUCT PROPERTIES

Clonality	Polyclonal
Clone ID	
Concentration	1 mg/mL
Conjugation	Unconjugated
Purification	The antibody was affinity-purified from rabbit antiserum by affinity-chromatography using epitope-specific immunogen.
Dilution Range	WB 1:500-1:2000 IHC 1:100-1:300 ELISA 1:5000 IF 1:50-200
Formulation	Liquid in PBS containing 50% Glycerol, 0.5% BSA and 0.02% Sodium Azide.
Isotype	IgG
Storage Instruction	Store at -20°C for up to 1 year from the date of receipt, and avoid repeat freeze-thaw cycles.

TARGET INFORMATION

Gene ID	4088
Gene Symbol	SMAD3
Uniprot ID	SMAD3_HUMAN
Immunogen	The antiserum was produced against synthesized peptide derived from the human Smad3 around the phosphorylation site of Ser213 at the amino acid range 179-228
Immunogen Region	179-228 aa
Specificity	Phospho-Smad3 (S213) Polyclonal Antibody detects endogenous levels of Smad3 protein only when phosphorylated at S213.
Immunogen Sequence	



Western blot analysis of lysates from HT29 cells, using Smad3 (Phospho-Ser213) Antibody. The lane on the right is blocked with the phospho peptide.