

Anti-Phospho-Smad2/3-Thr8 antibody (1-50 aa) (STJ90522)

STJ90522

GENERAL INFORMATION

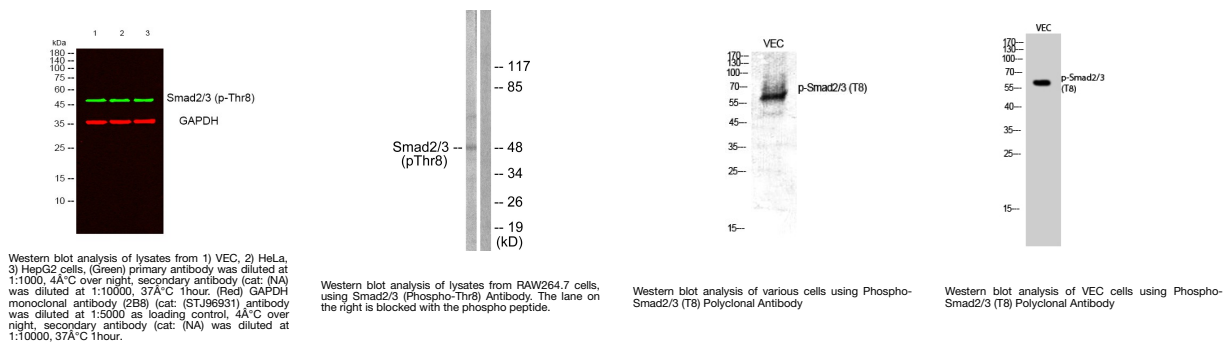
Product Type	Primary antibodies
Short Description	Rabbit polyclonal antibody anti-Phospho-Mothers against decapentaplegic homolog 2 and Mothers against decapentaplegic homolog 3-Thr8 (1-50 aa) is suitable for use in Western Blot, Immunofluorescence and ELISA research applications.
Applications	WB/IF/ELISA
Host/Source	Rabbit
Reactivity	Human/Mouse/Rat/Pig

PRODUCT PROPERTIES

Clonality	Polyclonal
Clone ID	
Concentration	1 mg/mL
Conjugation	Unconjugated
Purification	The antibody was affinity-purified from rabbit antiserum by affinity-chromatography using epitope-specific immunogen.
Dilution	WB 1:500-2000
Range	IF ICC 1:100-500 ELISA 1:5000-20000
Formulation	Liquid in PBS containing 50% Glycerol, 0.5% BSA and 0.02% Sodium Azide.
Isotype	IgG
Storage Instruction	Store at -20°C for up to 1 year from the date of receipt, and avoid repeat freeze-thaw cycles.

TARGET INFORMATION

Gene ID	4088 4087
Gene Symbol	SMAD3 SMAD2
Uniprot ID	SMAD3_HUMAN SMAD2_HUMAN
Immunogen	The antiserum was produced against synthesized peptide derived from the human Smad2/3 around the phosphorylation site of Thr8 at the amino acid range 1-50
Immunogen Region	1-50 aa
Specificity	Phospho-Smad2/3 (T8) Polyclonal Antibody detects endogenous levels of Smad2/3 protein only when phosphorylated at T8.
Immunogen Sequence	



This product is suitable for in-vitro studies under the RESEARCH USE ONLY [RUO] licence. This product must not be used as for diagnostic or other medical purposes.
St John's Laboratory Ltd, Knowledge Dock Business Centre, University Way, London, E16 2RD | Tel: 0208 223 3081