

Anti-Phospho-RAF1-Ser43 antibody (11-60 aa) (STJ90513)

STJ90513

GENERAL INFORMATION

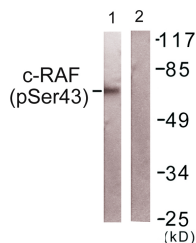
Product Type	Primary antibodies
Short Description	Rabbit polyclonal antibody anti-Phospho-RAF proto-oncogene serine/threonine-protein kinase-Ser43 (11-60 aa) is suitable for use in Western Blot, Immunofluorescence, ELISA and Immunohistochemistry research applications.
Applications	WB/IF/ELISA/IHC
Host/Source	Rabbit
Reactivity	Human/Mouse/Rat

PRODUCT PROPERTIES

Clonality	Polyclonal
Clone ID	
Concentration	1 mg/mL
Conjugation	Unconjugated
Purification	The antibody was affinity-purified from rabbit antiserum by affinity-chromatography using epitope-specific immunogen.
Dilution	WB 1:500-2000
Range	IF ICC 1:50-200 ELISA 1:2000-20000 IHC-P 1:50-200
Formulation	Liquid in PBS containing 50% Glycerol, 0.5% BSA and 0.02% Sodium Azide.
Isotype	IgG
Storage Instruction	Store at -20°C for up to 1 year from the date of receipt, and avoid repeat freeze-thaw cycles.

TARGET INFORMATION

Gene ID	5894
Gene Symbol	RAF1
Uniprot ID	RAF1_HUMAN
Immunogen	The antiserum was produced against synthesized peptide derived from the human C-RAF around the phosphorylation site of Ser43 at the amino acid range 11-60
Immunogen Region	11-60 aa
Specificity	Phospho-Raf-1 (S43) Polyclonal Antibody detects endogenous levels of Raf-1 protein only when phosphorylated at S43.
Immunogen Sequence	



Western blot analysis of lysates from NIH/3T3 cells, using C-RAF (Phospho-Ser43) Antibody. The lane on the right is blocked with the phospho peptide.