

Anti-Phospho-CD28-Tyr218 antibody (171-220 aa) (STJ90508)

STJ90508

GENERAL INFORMATION

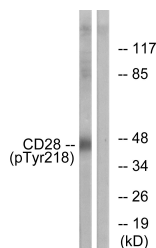
Product Type	Primary antibodies
Short Description	Rabbit polyclonal antibody anti-Phospho-T-cell-specific surface glycoprotein CD28-Tyr218 (171-220 aa) is suitable for use in Western Blot and ELISA research applications.
Applications	WB/ELISA
Host/Source	Rabbit
Reactivity	Human

PRODUCT PROPERTIES

Clonality	Polyclonal
Clone ID	
Concentration	1 mg/mL
Conjugation	Unconjugated
Purification	The antibody was affinity-purified from rabbit antiserum by affinity-chromatography using epitope-specific immunogen.
Dilution Range	WB 1:500-1:2000 ELISA 1:40000
Formulation	Liquid in PBS containing 50% Glycerol, 0.5% BSA and 0.02% Sodium Azide.
Isotype	IgG
Storage	Store at -20°C for up to 1 year from the date of receipt, and avoid repeat freeze-thaw cycles.
Instruction	

TARGET INFORMATION

Gene ID	940
Gene Symbol	CD28
Uniprot ID	CD28_HUMAN
Immunogen	The antiserum was produced against synthesized peptide derived from the human CD28 around the phosphorylation site of Tyr218 at the amino acid range 171-220
Immunogen Region	171-220 aa
Specificity	Phospho-CD28 (Y218) Polyclonal Antibody detects endogenous levels of CD28 protein only when phosphorylated at Y218.
Immunogen Sequence	



Western blot analysis of lysates from HepG2 cells treated with nocodazole 1 µg/ml 16h, using CD28 (Phospho-Tyr218) Antibody. The lane on the right is blocked with the phospho peptide.