

Anti-Phospho-CEBPA-Thr226 antibody (192-241 aa) (STJ90504)

STJ90504

GENERAL INFORMATION

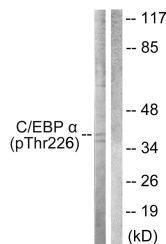
Product Type	Primary antibodies
Short Description	Rabbit polyclonal antibody anti-Phospho-CCAAT/enhancer-binding protein alpha-Thr226 (192-241 aa) is suitable for use in Western Blot and ELISA research applications.
Applications	WB/ELISA
Host/Source	Rabbit
Reactivity	Human/Mouse/Rat/Monkey

PRODUCT PROPERTIES

Clonality	Polyclonal
Clone ID	
Concentration	1 mg/mL
Conjugation	Unconjugated
Purification	The antibody was affinity-purified from rabbit antiserum by affinity-chromatography using epitope-specific immunogen.
Dilution Range	WB 1:500-1:2000 ELISA 1:10000
Formulation	Liquid in PBS containing 50% Glycerol, 0.5% BSA and 0.02% Sodium Azide.
Isotype	IgG
Storage	Store at -20°C for up to 1 year from the date of receipt, and avoid repeat freeze-thaw cycles.
Instruction	

TARGET INFORMATION

Gene ID	1050
Gene Symbol	CEBPA
Uniprot ID	CEBPA_HUMAN
Immunogen	The antiserum was produced against synthesized peptide derived from the human C/EBP-alpha around the phosphorylation site of Thr226 at the amino acid range 192-241
Immunogen Region	192-241 aa
Specificity	Phospho-C/EBP Alpha (T226) Polyclonal Antibody detects endogenous levels of C/EBP Alpha protein only when phosphorylated at T226.
Immunogen Sequence	



Western blot analysis of lysates from COS7 cells treated with EGF 200ng/ml 30', using C/EBP-alpha (Phospho-Thr226) Antibody. The lane on the right is blocked with the phospho peptide.