

Anti-Phospho-PRKCA-Tyr657 antibody (623-672 aa) (STJ90499)

STJ90499

GENERAL INFORMATION

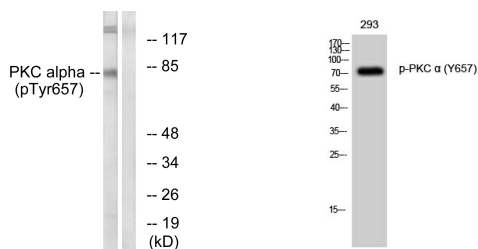
Product Type	Primary antibodies
Short Description	Rabbit polyclonal antibody anti-Phospho-Protein kinase C alpha type-Tyr657 (623-672 aa) is suitable for use in Western Blot and Immunohistochemistry research applications.
Applications	WB/IHC
Host/Source	Rabbit
Reactivity	Human/Mouse/Rat

PRODUCT PROPERTIES

Clonality	Polyclonal
Clone ID	
Concentration	1 mg/mL
Conjugation	Unconjugated
Purification	The antibody was affinity-purified from rabbit antiserum by affinity-chromatography using epitope-specific immunogen.
Dilution Range	WB 1:500-2000 IHC-P 1:50-300
Formulation	Liquid in PBS containing 50% Glycerol, 0.5% BSA and 0.02% Sodium Azide.
Isotype	IgG
Storage	Store at -20°C for up to 1 year from the date of receipt, and avoid repeat freeze-thaw cycles.
Instruction	

TARGET INFORMATION

Gene ID	5578
Gene Symbol	PRKCA
Uniprot ID	KPCA_HUMAN
Immunogen	The antiserum was produced against synthesized peptide derived from the human PKC alpha around the phosphorylation site of Tyr657 at the amino acid range 623-672
Immunogen Region	623-672 aa
Specificity	Phospho-PKC Alpha (Y657) Polyclonal Antibody detects endogenous levels of PKC Alpha protein only when phosphorylated at Y657.
Immunogen Sequence	



Western blot analysis of lysates from COLO205 cells, using PKC alpha (Phospho-Tyr657) Antibody. The lane on the right is blocked with the phospho peptide.

Western blot analysis of 293 cells using Phospho-PKC Alpha (Y657) Polyclonal Antibody diluted at 10% 1000