

Anti-Phospho-MAPK14-Thr180/Y182 antibody (151-200 aa) (STJ90498)

STJ90498

GENERAL INFORMATION

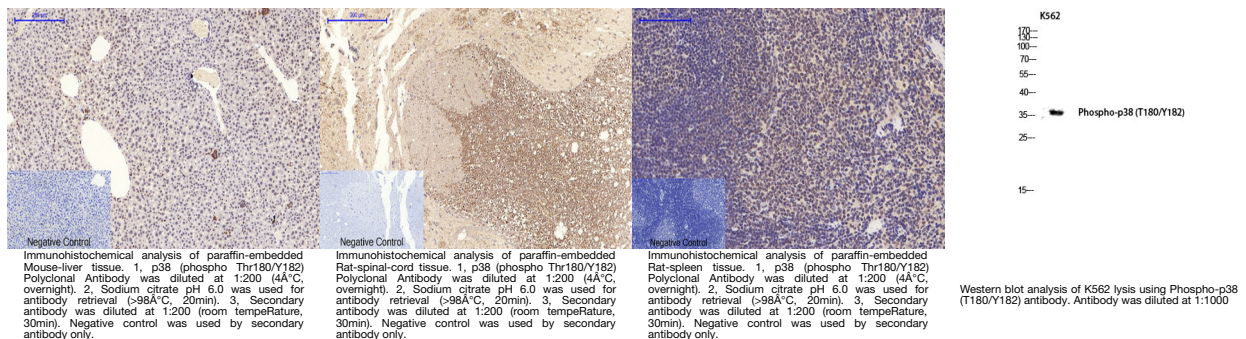
Product Type	Primary antibodies
Short Description	Rabbit polyclonal antibody anti-Phospho-Mitogen-activated protein kinase 14-Thr180/Y182 (151-200 aa) is suitable for use in Immunofluorescence, Western Blot, Flow Cytometry, Immunohistochemistry and ELISA research applications.
Applications	IF/WB/FC/IHC/ELISA
Host/Source	Rabbit
Reactivity	Human/Mouse/Rat/Guinea Pig

PRODUCT PROPERTIES

Clonality	Polyclonal
Clone ID	
Concentration	1 mg/mL
Conjugation	Unconjugated
Purification	The antibody was affinity-purified from rabbit antiserum by affinity-chromatography using epitope-specific immunogen.
Dilution	IF ICC 1:100-500
Range	WB 1:500-2000 FC 1:50-200 IHC-P 1:100-500 ELISA 1:5000-20000
Formulation	Liquid in PBS containing 50% Glycerol, 0.5% BSA and 0.02% Sodium Azide.
Isotype	IgG
Storage	Store at -20°C for up to 1 year from the date of receipt, and avoid repeat freeze-thaw cycles.
Instruction	

TARGET INFORMATION

Gene ID	1432
Gene Symbol	MAPK14
Uniprot ID	MK14_HUMAN
Immunogen	The antiserum was produced against synthesized peptide derived from the human p38 MAPK around the phosphorylation site of Thr179 and Tyr181 at the amino acid range 151-200
Immunogen Region	151-200 aa
Specificity	Phospho-p38 (T180/Y182) Polyclonal Antibody detects endogenous levels of p38 protein only when phosphorylated at T180/Y182.
Immunogen Sequence	



This product is suitable for in-vitro studies under the RESEARCH USE ONLY [RUO] licence. This product must not be used as for diagnostic or other medical purposes.
St John's Laboratory Ltd, Knowledge Dock Business Centre, University Way, London, E16 2RD | Tel: 0208 223 3081