

Anti-Phospho-ADAM17-Thr735 antibody (701-750 aa) (STJ90495)

STJ90495

GENERAL INFORMATION

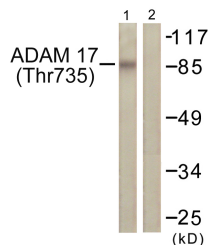
Product Type	Primary antibodies
Short Description	Rabbit polyclonal antibody anti-Phospho-Disintegrin and metalloproteinase domain-containing protein 17-Thr735 (701-750 aa) is suitable for use in Western Blot, Immunohistochemistry, Immunofluorescence and ELISA research applications.
Applications	WB/IHC/IF/ELISA
Host/Source	Rabbit
Reactivity	Human/Mouse/Rat

PRODUCT PROPERTIES

Clonality	Polyclonal
Clone ID	
Concentration	1 mg/mL
Conjugation	Unconjugated
Purification	The antibody was affinity-purified from rabbit antiserum by affinity-chromatography using epitope-specific immunogen.
Dilution	WB 1:500-1:2000
Range	IHC 1:100-1:300 ELISA 1:20000 IF 1:50-200
Formulation	Liquid in PBS containing 50% Glycerol, 0.5% BSA and 0.02% Sodium Azide.
Isotype	IgG
Storage Instruction	Store at -20°C for up to 1 year from the date of receipt, and avoid repeat freeze-thaw cycles.

TARGET INFORMATION

Gene ID	6868
Gene Symbol	ADAM17
Uniprot ID	ADA17_HUMAN
Immunogen	The antiserum was produced against synthesized peptide derived from the human ADAM 17 around the phosphorylation site of Thr735 at the amino acid range 701-750
Immunogen Region	701-750 aa
Specificity	Phospho-TACE (T735) Polyclonal Antibody detects endogenous levels of TACE protein only when phosphorylated at T735.
Immunogen Sequence	



Western blot analysis of lysates from K562 cells treated with UV 5', using ADAM 17 (Phospho-Thr735) Antibody. The lane on the right is blocked with the phospho peptide.