

Anti-Phospho-PIM1-Tyr309 antibody (281-330 aa) (STJ90491)

STJ90491

GENERAL INFORMATION

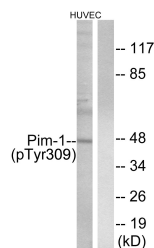
Product Type	Primary antibodies
Short Description	Rabbit polyclonal antibody anti-Phospho-Serine/threonine-protein kinase pim-1-Tyr309 (281-330 aa) is suitable for use in Western Blot and ELISA research applications.
Applications	WB/ELISA
Host/Source	Rabbit
Reactivity	Human/Mouse/Rat

PRODUCT PROPERTIES

Clonality	Polyclonal
Clone ID	
Concentration	1 mg/mL
Conjugation	Unconjugated
Purification	The antibody was affinity-purified from rabbit antiserum by affinity-chromatography using epitope-specific immunogen.
Dilution Range	WB 1:500-1:2000 ELISA 1:40000
Formulation	Liquid in PBS containing 50% Glycerol, 0.5% BSA and 0.02% Sodium Azide.
Isotype	IgG
Storage	Store at -20°C for up to 1 year from the date of receipt, and avoid repeat freeze-thaw cycles.
Instruction	

TARGET INFORMATION

Gene ID	5292
Gene Symbol	PIM1
Uniprot ID	PIM1_HUMAN
Immunogen	The antiserum was produced against synthesized peptide derived from the human Pim-1 around the phosphorylation site of Tyr309 at the amino acid range 281-330
Immunogen Region	281-330 aa
Specificity	Phospho-Pim-1 (Y309) Polyclonal Antibody detects endogenous levels of Pim-1 protein only when phosphorylated at Y309.
Immunogen Sequence	



Western blot analysis of lysates from HUVEC cells treated with PMA 125ng/ml 30', using Pim-1 (Phospho-Tyr309) Antibody. The lane on the right is blocked with the phospho peptide.