

Anti-Phospho-MAP2K1-Ser298 antibody (264-313 aa) (STJ90489)

STJ90489

GENERAL INFORMATION

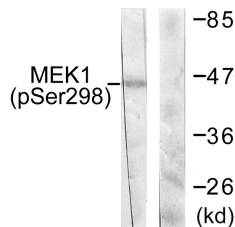
Product Type	Primary antibodies
Short Description	Rabbit polyclonal antibody anti-Phospho-Dual specificity mitogen-activated protein kinase kinase 1-Ser298 (264-313 aa) is suitable for use in Western Blot, Immunohistochemistry, Immunofluorescence and ELISA research applications.
Applications	WB/IHC/IF/ELISA
Host/Source	Rabbit
Reactivity	Human/Mouse/Rat

PRODUCT PROPERTIES

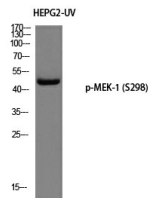
Clonality	Polyclonal
Clone ID	
Concentration	1 mg/mL
Conjugation	Unconjugated
Purification	The antibody was affinity-purified from rabbit antiserum by affinity-chromatography using epitope-specific immunogen.
Dilution	WB 1:500-1:2000
Range	IHC 1:100-1:300 ELISA 1:10000 IF 1:50-200
Formulation	Liquid in PBS containing 50% Glycerol, 0.5% BSA and 0.02% Sodium Azide.
Isotype	IgG
Storage	Store at -20°C for up to 1 year from the date of receipt, and avoid repeat freeze-thaw cycles.
Instruction	

TARGET INFORMATION

Gene ID	5604
Gene Symbol	MAP2K1
Uniprot ID	MP2K1_HUMAN
Immunogen	The antiserum was produced against synthesized peptide derived from the human MEK1 around the phosphorylation site of Ser298 at the amino acid range 264-313
Immunogen Region	264-313 aa
Specificity	Phospho-MEK-1 (S298) Polyclonal Antibody detects endogenous levels of MEK-1 protein only when phosphorylated at S298.
Immunogen Sequence	



Western blot analysis of lysates from NIH/3T3 cells treated with PDGF 50ng/ml 20', using MEK1 (Phospho-Ser298) Antibody. The lane on the right is blocked with the phospho peptide.



Western blot analysis of HEPG2-UV using p-MEK-1 (S298) antibody. Antibody was diluted at 1:500

This product is suitable for in-vitro studies under the RESEARCH USE ONLY [RUO] licence. This product must not be used as for diagnostic or other medical purposes.
St John's Laboratory Ltd, Knowledge Dock Business Centre, University Way, London, E16 2RD | Tel: 0208 223 3081