

Anti-Phospho-LAT-Tyr200 antibody (171-220 aa) (STJ90487)

STJ90487

GENERAL INFORMATION

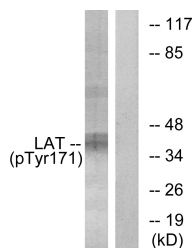
Product Type	Primary antibodies
Short Description	Rabbit polyclonal antibody anti-Phospho-Linker for activation of T-cells family member 1-Tyr200 (171-220 aa) is suitable for use in Western Blot and Immunohistochemistry research applications.
Applications	WB/IHC
Host/Source	Rabbit
Reactivity	Human/Mouse/Rat

PRODUCT PROPERTIES

Clonality	Polyclonal
Clone ID	
Concentration	1 mg/mL
Conjugation	Unconjugated
Purification	The antibody was affinity-purified from rabbit antiserum by affinity-chromatography using epitope-specific immunogen.
Dilution Range	WB 1:500-2000 IHC-P 1:50-300
Formulation	Liquid in PBS containing 50% Glycerol, 0.5% BSA and 0.02% Sodium Azide.
Isotype	IgG
Storage	Store at -20°C for up to 1 year from the date of receipt, and avoid repeat freeze-thaw cycles.
Instruction	

TARGET INFORMATION

Gene ID	27040
Gene Symbol	LAT
Uniprot ID	LAT_HUMAN
Immunogen	The antiserum was produced against synthesized peptide derived from the human LAT around the phosphorylation site of Tyr171 at the amino acid range 171-220
Immunogen Region	171-220 aa
Specificity	Phospho-LAT (Y200) Polyclonal Antibody detects endogenous levels of LAT protein only when phosphorylated at Y200.
Immunogen Sequence	



Western blot analysis of lysates from Jurkat cells treated with UV 15, using LAT (Phospho-Tyr171) Antibody. The lane on the right is blocked with the phospho peptide.