

## Anti-Phospho-GTF2I-Tyr248 antibody (214-263 aa) (STJ90480)

STJ90480

### GENERAL INFORMATION

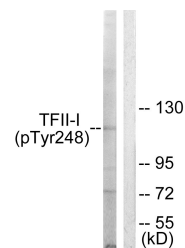
<b>Product Type</b>	Primary antibodies
<b>Short Description</b>	Rabbit polyclonal antibody anti-Phospho-General transcription factor II-I-Tyr248 (214-263 aa) is suitable for use in Western Blot and ELISA research applications.
<b>Applications</b>	WB/ELISA
<b>Host/Source</b>	Rabbit
<b>Reactivity</b>	Human/Mouse/Rat

### PRODUCT PROPERTIES

<b>Clonality</b>	Polyclonal
<b>Clone ID</b>	
<b>Concentration</b>	1 mg/mL
<b>Conjugation</b>	Unconjugated
<b>Purification</b>	The antibody was affinity-purified from rabbit antiserum by affinity-chromatography using epitope-specific immunogen.
<b>Dilution Range</b>	WB 1:500-1:2000 ELISA 1:5000
<b>Formulation</b>	Liquid in PBS containing 50% Glycerol, 0.5% BSA and 0.02% Sodium Azide.
<b>Isotype</b>	IgG
<b>Storage</b>	Store at -20°C for up to 1 year from the date of receipt, and avoid repeat freeze-thaw cycles.
<b>Instruction</b>	

### TARGET INFORMATION

<b>Gene ID</b>	<a href="#">2969</a>
<b>Gene Symbol</b>	<a href="#">GTF2I</a>
<b>Uniprot ID</b>	<a href="#">GTF2I_HUMAN</a>
<b>Immunogen</b>	The antiserum was produced against synthesized peptide derived from the human TFII-I around the phosphorylation site of Tyr248 at the amino acid range 214-263
<b>Immunogen Region</b>	214-263 aa
<b>Specificity</b>	Phospho-TFII-I (Y248) Polyclonal Antibody detects endogenous levels of TFII-I protein only when phosphorylated at Y248.
<b>Immunogen Sequence</b>	



Western blot analysis of lysates from LOVO cells, using TFII-I (Phospho-Tyr248) Antibody. The lane on the right is blocked with the phospho peptide.