

Anti-Phospho-RET-Tyr1015 antibody (991-1040 aa) (STJ90478)

STJ90478

GENERAL INFORMATION

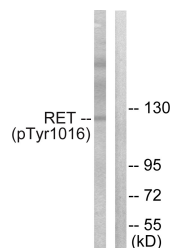
Product Type	Primary antibodies
Short Description	Rabbit polyclonal antibody anti-Phospho-Proto-oncogene tyrosine-protein kinase receptor Ret-Tyr1015 (991-1040 aa) is suitable for use in Western Blot and Immunohistochemistry research applications.
Applications	WB/IHC
Host/Source	Rabbit
Reactivity	Human/Mouse/Rat/Monkey

PRODUCT PROPERTIES

Clonality	Polyclonal
Clone ID	
Concentration	1 mg/mL
Conjugation	Unconjugated
Purification	The antibody was affinity-purified from rabbit antiserum by affinity-chromatography using epitope-specific immunogen.
Dilution	WB 1:500-2000
Range	IHC-P 1:50-300
Formulation	Liquid in PBS containing 50% Glycerol, 0.5% BSA and 0.02% Sodium Azide.
Isotype	IgG
Storage	Store at -20°C for up to 1 year from the date of receipt, and avoid repeat freeze-thaw cycles.
Instruction	

TARGET INFORMATION

Gene ID	5979
Gene Symbol	RET
Uniprot ID	RET_HUMAN
Immunogen	The antiserum was produced against synthesized peptide derived from the human Ret around the phosphorylation site of Tyr1015 at the amino acid range 991-1040
Immunogen Region	991-1040 aa
Specificity	Phospho-Ret (Y1015) Polyclonal Antibody detects endogenous levels of Ret protein only when phosphorylated at Y1015.
Immunogen Sequence	



Western blot analysis of lysates from COS7 cells treated with EGF 200ng/ml 30', using Ret (Phospho-Tyr1015) Antibody. The lane on the right is blocked with the phospho peptide.