

Anti-Phospho-PLCG1-Tyr1253 antibody (1221-1270 aa) (STJ90475)

STJ90475

GENERAL INFORMATION

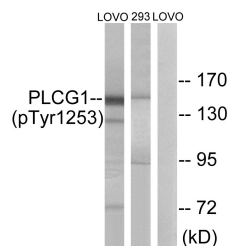
Product Type	Primary antibodies
Short Description	Rabbit polyclonal antibody anti-Phospho-1-phosphatidylinositol 4, 5-bisphosphate phosphodiesterase gamma-1-Tyr1253 (1221-1270 aa) is suitable for use in Western Blot and Immunohistochemistry research applications.
Applications	WB/IHC
Host/Source	Rabbit
Reactivity	Human/Mouse/Rat

PRODUCT PROPERTIES

Clonality	Polyclonal
Clone ID	
Concentration	1 mg/mL
Conjugation	Unconjugated
Purification	The antibody was affinity-purified from rabbit antiserum by affinity-chromatography using epitope-specific immunogen.
Dilution	WB 1:500-2000
Range	IHC-P 1:50-300
Formulation	Liquid in PBS containing 50% Glycerol, 0.5% BSA and 0.02% Sodium Azide.
Isotype	IgG
Storage	Store at -20°C for up to 1 year from the date of receipt, and avoid repeat freeze-thaw cycles.
Instruction	

TARGET INFORMATION

Gene ID	5335
Gene Symbol	PLCG1
Uniprot ID	PLCG1_HUMAN
Immunogen	The antiserum was produced against synthesized peptide derived from the human PLCG1 around the phosphorylation site of Tyr1253 at the amino acid range 1221-1270
Immunogen Region	1221-1270 aa
Specificity	Phospho-PLC Gamma 1 (Y1253) Polyclonal Antibody detects endogenous levels of PLC Gamma 1 protein only when phosphorylated at Y1253.
Immunogen Sequence	



This product is suitable for in-vitro studies under the RESEARCH USE ONLY [RUO] licence. This product must not be used as for diagnostic or other medical purposes.
St John's Laboratory Ltd, Knowledge Dock Business Centre, University Way, London, E16 2RD | Tel: 0208 223 3081