

Anti-Phospho-CSF1R-Tyr809 antibody (781-830 aa) (STJ90468)

STJ90468

GENERAL INFORMATION

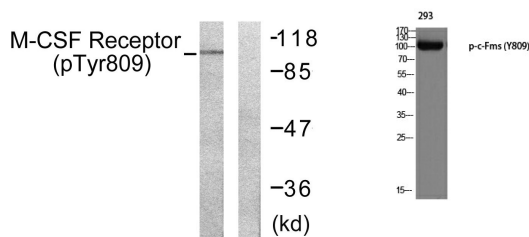
Product Type	Primary antibodies
Short Description	Rabbit polyclonal antibody anti-Phospho-Macrophage colony-stimulating factor 1 receptor-Tyr809 (781-830 aa) is suitable for use in Western Blot and ELISA research applications.
Applications	WB/ELISA
Host/Source	Rabbit
Reactivity	Human/Mouse/Rat

PRODUCT PROPERTIES

Clonality	Polyclonal
Clone ID	
Concentration	1 mg/mL
Conjugation	Unconjugated
Purification	The antibody was affinity-purified from rabbit antiserum by affinity-chromatography using epitope-specific immunogen.
Dilution Range	WB 1:500-1:2000 ELISA 1:5000
Formulation	Liquid in PBS containing 50% Glycerol, 0.5% BSA and 0.02% Sodium Azide.
Isotype	IgG
Storage	Store at -20°C for up to 1 year from the date of receipt, and avoid repeat freeze-thaw cycles.
Instruction	

TARGET INFORMATION

Gene ID	1436
Gene Symbol	CSF1R
Uniprot ID	CSF1R_HUMAN
Immunogen	The antiserum was produced against synthesized peptide derived from the human M-CSF Receptor around the phosphorylation site of Tyr809 at the amino acid range 781-830
Immunogen Region	781-830 aa
Specificity	Phospho-c-Fms (Y809) Polyclonal Antibody detects endogenous levels of c-Fms protein only when phosphorylated at Y809.
Immunogen Sequence	



Western blot analysis of lysates from 293 cells treated with LPS. 100ng/ml 30', using M-CSF Receptor (Phospho-Tyr809) Antibody. The lane on the right is blocked with the phospho peptide.

Western blot analysis of 293 using p-c-Fms (Y809) antibody.

This product is suitable for in-vitro studies under the RESEARCH USE ONLY [RUO] licence. This product must not be used as for diagnostic or other medical purposes.
St John's Laboratory Ltd, Knowledge Dock Business Centre, University Way, London, E16 2RD | Tel: 0208 223 3081