

Anti-Phospho-HDAC5/9-Ser259/220 antibody (225-274 aa) (STJ90459)

STJ90459

GENERAL INFORMATION

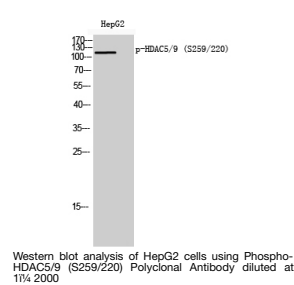
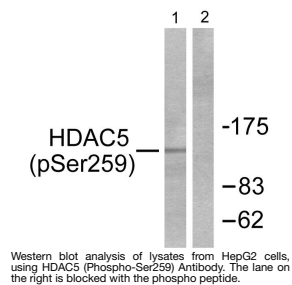
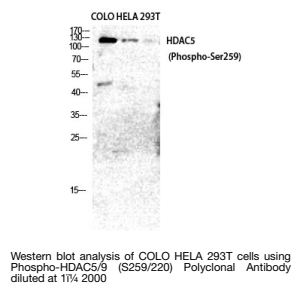
Product Type	Primary antibodies
Short Description	Rabbit polyclonal antibody anti-Phospho-Histone deacetylase 5 and Histone deacetylase 9-Ser259/220 (225-274 aa) is suitable for use in Western Blot, Immunohistochemistry, Immunofluorescence and ELISA research applications.
Applications	WB/IHC/IF/ELISA
Host/Source	Rabbit
Reactivity	Human/Mouse

PRODUCT PROPERTIES

Clonality	Polyclonal
Clone ID	
Concentration	1 mg/mL
Conjugation	Unconjugated
Purification	The antibody was affinity-purified from rabbit antiserum by affinity-chromatography using epitope-specific immunogen.
Dilution Range	WB 1:500-1:2000 IHC 1:100-1:300 ELISA 1:10000 IF 1:50-200
Formulation	Liquid in PBS containing 50% Glycerol, 0.5% BSA and 0.02% Sodium Azide.
Isotype	IgG
Storage Instruction	Store at -20°C for up to 1 year from the date of receipt, and avoid repeat freeze-thaw cycles.

TARGET INFORMATION

Gene ID	10014 9734
Gene Symbol	HDAC5 HDAC9
Uniprot ID	HDAC5_HUMAN HDAC9_HUMAN
Immunogen	The antiserum was produced against synthesized peptide derived from the human HDAC5 around the phosphorylation site of Ser259 at the amino acid range 225-274
Immunogen Region	225-274 aa
Specificity	Phospho-HDAC5/9 (S259/220) Polyclonal Antibody detects endogenous levels of HDAC5/9 protein only when phosphorylated at S259/220.
Immunogen Sequence	



This product is suitable for in-vitro studies under the RESEARCH USE ONLY [RUO] licence. This product must not be used as for diagnostic or other medical purposes.
St John's Laboratory Ltd, Knowledge Dock Business Centre, University Way, London, E16 2RD | Tel: 0208 223 3081