

Anti-Phospho-ATF1-Ser63 antibody (31-80 aa) (STJ90454)

STJ90454

GENERAL INFORMATION

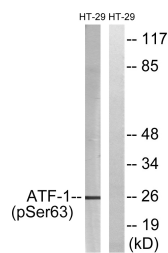
Product Type	Primary antibodies
Short Description	Rabbit polyclonal antibody anti-Phospho-Cyclic AMP-dependent transcription factor ATF-1-Ser63 (31-80 aa) is suitable for use in Western Blot and ELISA research applications.
Applications	WB/ELISA
Host/Source	Rabbit
Reactivity	Human/Mouse

PRODUCT PROPERTIES

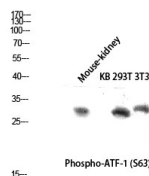
Clonality	Polyclonal
Clone ID	
Concentration	1 mg/mL
Conjugation	Unconjugated
Purification	The antibody was affinity-purified from rabbit antiserum by affinity-chromatography using epitope-specific immunogen.
Dilution Range	WB 1:500-1:2000 ELISA 1:5000
Formulation	Liquid in PBS containing 50% Glycerol, 0.5% BSA and 0.02% Sodium Azide.
Isotype	IgG
Storage	Store at -20°C for up to 1 year from the date of receipt, and avoid repeat freeze-thaw cycles.
Instruction	

TARGET INFORMATION

Gene ID	466
Gene Symbol	ATF1
Uniprot ID	ATF1_HUMAN
Immunogen	The antiserum was produced against synthesized peptide derived from the human ATF1 around the phosphorylation site of Ser63 at the amino acid range 31-80
Immunogen Region	31-80 aa
Specificity	Phospho-ATF-1 (S63) Polyclonal Antibody detects endogenous levels of ATF-1 protein only when phosphorylated at S63.
Immunogen Sequence	



Western blot analysis of lysates from HT29 cells treated with insulin 0.01U/mL 15', using ATF1 (Phospho-Ser63) Antibody. The lane on the right is blocked with the phospho peptide.



Western blot analysis of Mouse-kidney KB 293T 3T3 lysis using Phospho-ATF-1 (S63) antibody. Antibody was diluted at 1:500 cells nucleus extracted by Minute TM Cytoplasmic and Nuclear Fractionation kit (SC-003, Inventoriatech, MN, USA).