

Anti-Phospho-RUNX1-Ser249 antibody (242-291 aa) (STJ90453)

STJ90453

GENERAL INFORMATION

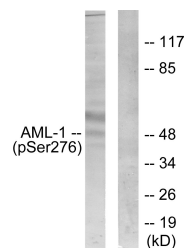
Product Type	Primary antibodies
Short Description	Rabbit polyclonal antibody anti-Phospho-Runt-related transcription factor 1-Ser249 (242-291 aa) is suitable for use in Western Blot and ELISA research applications.
Applications	WB/ELISA
Host/Source	Rabbit
Reactivity	Human/Mouse/Rat

PRODUCT PROPERTIES

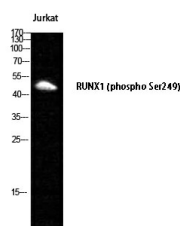
Clonality	Polyclonal
Clone ID	
Concentration	1 mg/mL
Conjugation	Unconjugated
Purification	The antibody was affinity-purified from rabbit antiserum by affinity-chromatography using epitope-specific immunogen.
Dilution Range	WB 1:500-1:2000 ELISA 1:5000
Formulation	Liquid in PBS containing 50% Glycerol, 0.5% BSA and 0.02% Sodium Azide.
Isotype	IgG
Storage	Store at -20°C for up to 1 year from the date of receipt, and avoid repeat freeze-thaw cycles.
Instruction	

TARGET INFORMATION

Gene ID	861
Gene Symbol	RUNX1
Uniprot ID	RUNX1_HUMAN
Immunogen	The antiserum was produced against synthesized peptide derived from the human AML1 around the phosphorylation site of Ser276 at the amino acid range 242-291
Immunogen Region	242-291 aa
Specificity	Phospho-RUNX1 (S249) Polyclonal Antibody detects endogenous levels of RUNX1 protein only when phosphorylated at S249.
Immunogen Sequence	



Western blot analysis of lysates from Jurkat cells, using AML1 (Phospho-Ser276) Antibody. The lane on the right is blocked with the phospho peptide.



Western blot analysis of Jurkat cells using Phospho-RUNX1 (S249) Polyclonal Antibody cells nucleus extracted by Minute TM Cytoplasmic and Nuclear Fractionation kit (SC-003, Inventibiotec, MN, USA).