

Anti-Phospho-CCR5-Ser349 antibody (303-352 aa) (STJ90450)

STJ90450

GENERAL INFORMATION

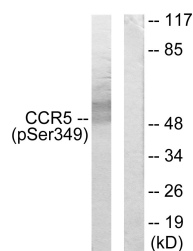
Product Type	Primary antibodies
Short Description	Rabbit polyclonal antibody anti-Phospho-C-C chemokine receptor type 5-Ser349 (303-352 aa) is suitable for use in Western Blot and ELISA research applications.
Applications	WB/ELISA
Host/Source	Rabbit
Reactivity	Human/Rat/Mouse

PRODUCT PROPERTIES

Clonality	Polyclonal
Clone ID	
Concentration	1 mg/mL
Conjugation	Unconjugated
Purification	The antibody was affinity-purified from rabbit antiserum by affinity-chromatography using epitope-specific immunogen.
Dilution Range	WB 1:500-1:2000 ELISA 1:5000
Formulation	Liquid in PBS containing 50% Glycerol, 0.5% BSA and 0.02% Sodium Azide.
Isotype	IgG
Storage	Store at -20°C for up to 1 year from the date of receipt, and avoid repeat freeze-thaw cycles.
Instruction	

TARGET INFORMATION

Gene ID	1234
Gene Symbol	CCR5
Uniprot ID	CCR5_HUMAN
Immunogen	The antiserum was produced against synthesized peptide derived from the human CCR5 around the phosphorylation site of Ser349 at the amino acid range 303-352
Immunogen Region	303-352 aa
Specificity	Phospho-CKR-5 (S349) Polyclonal Antibody detects endogenous levels of CKR-5 protein only when phosphorylated at S349.
Immunogen Sequence	



Western blot analysis of lysates from RAW264.7 cells treated with PMA 125ng/ml 30', using CCR5 (Phospho-Ser349) Antibody. The lane on the right is blocked with the phospho peptide.



Western blot analysis of various cells using Phospho-CKR-5 (S349) Polyclonal Antibody diluted at 1/1000