

Anti-Phospho-ZNF598-Tyr306 antibody (STJ90438)

STJ90438

GENERAL INFORMATION

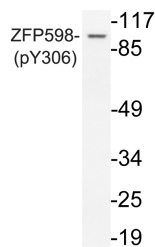
Product Type	Primary antibodies
Short Description	Rabbit polyclonal antibody anti-Phospho-E3 ubiquitin-protein ligase ZNF598-Tyr306 is suitable for use in Western Blot, Immunohistochemistry, Immunofluorescence and ELISA research applications.
Applications	WB/IHC/IF/ELISA
Host/Source	Rabbit
Reactivity	Human/Mouse

PRODUCT PROPERTIES

Clonality	Polyclonal
Clone ID	
Concentration	1 mg/mL
Conjugation	Unconjugated
Purification	The antibody was affinity-purified from rabbit antiserum by affinity-chromatography using epitope-specific immunogen.
Dilution Range	WB 1:500-1:2000 IHC 1:100-1:300 ELISA 1:10000 IF 1:50-200
Formulation	Liquid in PBS containing 50% Glycerol, 0.5% BSA and 0.02% Sodium Azide.
Isotype	IgG
Storage Instruction	Store at -20°C for up to 1 year from the date of receipt, and avoid repeat freeze-thaw cycles.

TARGET INFORMATION

Gene ID	90850
Gene Symbol	ZNF598
Uniprot ID	ZNF598_HUMAN
Immunogen	Synthesized phospho-peptide around the phosphorylation site of human ZFP598 (phospho Tyr306)
Immunogen Region	
Specificity	Phospho-ZFP598 (Y306) Polyclonal Antibody detects endogenous levels of ZFP598 protein only when phosphorylated at Y306.
Immunogen Sequence	



Western blot analysis of lysate from Jurkat cells, using phospho-ZFP598 (Phospho-Tyr306) antibody.