

Anti-Phospho-MAPT-Ser404 antibody (691-740 aa) (STJ90424)

STJ90424

GENERAL INFORMATION

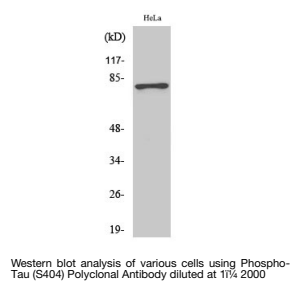
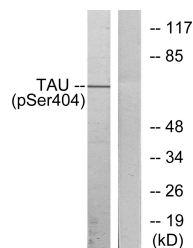
Product Type	Primary antibodies
Short Description	Rabbit polyclonal antibody anti-Phospho-Microtubule-associated protein tau-Ser404 (691-740 aa) is suitable for use in Western Blot and ELISA research applications.
Applications	WB/ELISA
Host/Source	Rabbit
Reactivity	Human/Mouse/Rat

PRODUCT PROPERTIES

Clonality	Polyclonal
Clone ID	
Concentration	1 mg/mL
Conjugation	Unconjugated
Purification	The antibody was affinity-purified from rabbit antiserum by affinity-chromatography using epitope-specific immunogen.
Dilution Range	WB 1:500-1:2000 ELISA 1:20000
Formulation	Liquid in PBS containing 50% Glycerol, 0.5% BSA and 0.02% Sodium Azide.
Isotype	IgG
Storage	Store at -20°C for up to 1 year from the date of receipt, and avoid repeat freeze-thaw cycles.
Instruction	

TARGET INFORMATION

Gene ID	4137
Gene Symbol	MAPT
Uniprot ID	TAU_HUMAN
Immunogen	The antiserum was produced against synthesized peptide derived from the human Tau around the phosphorylation site of Ser404 at the amino acid range 691-740
Immunogen Region	691-740 aa
Specificity	Phospho-Tau (S404) Polyclonal Antibody detects endogenous levels of Tau protein only when phosphorylated at S404.
Immunogen Sequence	



This product is suitable for in-vitro studies under the RESEARCH USE ONLY [RUO] licence. This product must not be used as for diagnostic or other medical purposes.
St John's Laboratory Ltd, Knowledge Dock Business Centre, University Way, London, E16 2RD | Tel: 0208 223 3081