

## Anti-Phospho-MAPT-Ser396 antibody (681-730 aa) (STJ90423)

STJ90423

### GENERAL INFORMATION

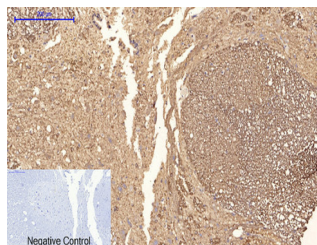
<b>Product Type</b>	Primary antibodies
<b>Short Description</b>	Rabbit polyclonal antibody anti-Phospho-Microtubule-associated protein tau-Ser396 (681-730 aa) is suitable for use in Immunofluorescence, Western Blot, Immunohistochemistry and ELISA research applications.
<b>Applications</b>	IF/WB/IHC/ELISA
<b>Host/Source</b>	Rabbit
<b>Reactivity</b>	Human/Mouse/Rat

### PRODUCT PROPERTIES

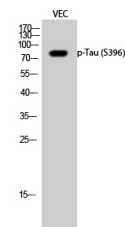
<b>Clonality</b>	Polyclonal
<b>Clone ID</b>	
<b>Concentration</b>	1 mg/mL
<b>Conjugation</b>	Unconjugated
<b>Purification</b>	The antibody was affinity-purified from rabbit antiserum by affinity-chromatography using epitope-specific immunogen.
<b>Dilution</b>	IF 1:50-200
<b>Range</b>	WB 1:500-2000 IHC 1:50-300 IHC 1:50-300
<b>Formulation</b>	Liquid in PBS containing 50% Glycerol, 0.5% BSA and 0.02% Sodium Azide.
<b>Isotype</b>	IgG
<b>Storage Instruction</b>	Store at -20°C for up to 1 year from the date of receipt, and avoid repeat freeze-thaw cycles.

### TARGET INFORMATION

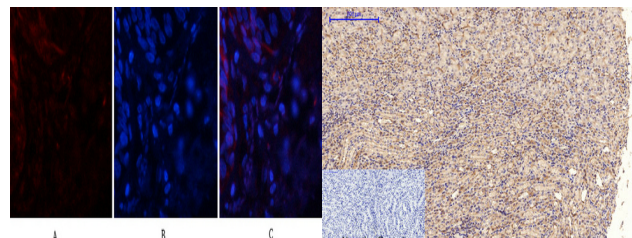
<b>Gene ID</b>	4137
<b>Gene Symbol</b>	MAPT
<b>Uniprot ID</b>	TAU_HUMAN
<b>Immunogen</b>	The antiserum was produced against synthesized peptide derived from the human Tau around the phosphorylation site of Ser396 at the amino acid range 681-730
<b>Immunogen Region</b>	681-730 aa
<b>Specificity</b>	Phospho-Tau (S396) Polyclonal Antibody detects endogenous levels of Tau protein only when phosphorylated at S396.
<b>Immunogen Sequence</b>	



Negative Control  
Immunohistochemical analysis of paraffin-embedded Rat-spinal-cord tissue. 1. Tau (phospho Ser396) Polyclonal Antibody was diluted at 1:200 (4A°C, overnight). 2. Sodium citrate pH 6.0 was used for antibody retrieval (>96A°C, 20min). 3. Secondary antibody was diluted at 1:200 (room temperature, 30min). Negative control was used by secondary antibody only.



Western blot analysis of VEC cells using Phospho-Tau (S396) Polyclonal Antibody diluted at 1/14 2000



Immunofluorescence analysis of human-lung tissue. 1. Tau (phospho Ser396) Polyclonal Antibody (red) was diluted at 1:200 (4A°C, overnight). 2. Cy3 labeled Secondary antibody was diluted at 1:300 (room temperature, 50min). 3. Picture B: DAPI (blue) 10min. Picture A: Target. Picture B: DAPI. Picture C: merge of A+B

Negative Control  
Immunohistochemical analysis of paraffin-embedded Mouse-kidney tissue. 1. Tau (phospho Ser396) Polyclonal Antibody was diluted at 1:200 (4A°C, overnight). 2. Sodium citrate pH 6.0 was used for antibody retrieval (>96A°C, 20min). 3. Secondary antibody was diluted at 1:200 (room temperature, 30min). Negative control was used by secondary antibody only.

This product is suitable for in-vitro studies under the RESEARCH USE ONLY [RUO] licence. This product must not be used as for diagnostic or other medical purposes.

St John's Laboratory Ltd, Knowledge Dock Business Centre, University Way, London, E16 2RD | Tel: 0208 223 3081