

## Anti-Phospho-STAT6-Tyr641 antibody (608-657 aa) (STJ90416)

STJ90416

### GENERAL INFORMATION

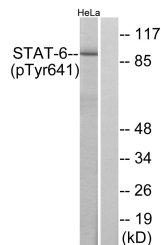
<b>Product Type</b>	Primary antibodies
<b>Short Description</b>	Rabbit polyclonal antibody anti-Phospho-Signal transducer and activator of transcription 6-Tyr641 (608-657 aa) is suitable for use in Western Blot, Immunohistochemistry, Immunofluorescence and ELISA research applications.
<b>Applications</b>	WB/IHC/IF/ELISA
<b>Host/Source</b>	Rabbit
<b>Reactivity</b>	Human/Mouse/Rat

### PRODUCT PROPERTIES

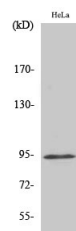
<b>Clonality</b>	Polyclonal
<b>Clone ID</b>	
<b>Concentration</b>	1 mg/mL
<b>Conjugation</b>	Unconjugated
<b>Purification</b>	The antibody was affinity-purified from rabbit antiserum by affinity-chromatography using epitope-specific immunogen.
<b>Dilution Range</b>	WB 1:500-1:2000 IHC 1:100-1:300 ELISA 1:10000 IF 1:50-200
<b>Formulation</b>	Liquid in PBS containing 50% Glycerol, 0.5% BSA and 0.02% Sodium Azide.
<b>Isotype</b>	IgG
<b>Storage Instruction</b>	Store at -20°C for up to 1 year from the date of receipt, and avoid repeat freeze-thaw cycles.

### TARGET INFORMATION

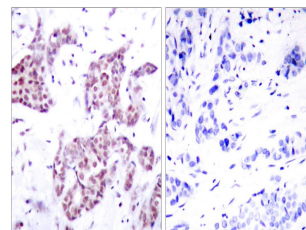
<b>Gene ID</b>	6778
<b>Gene Symbol</b>	STAT6
<b>Uniprot ID</b>	STAT6_HUMAN
<b>Immunogen</b>	The antiserum was produced against synthesized peptide derived from the human STAT6 around the phosphorylation site of Tyr641 at the amino acid range 608-657
<b>Immunogen Region</b>	608-657 aa
<b>Specificity</b>	Phospho-Stat6 (Y641) Polyclonal Antibody detects endogenous levels of Stat6 protein only when phosphorylated at Y641.
<b>Immunogen Sequence</b>	



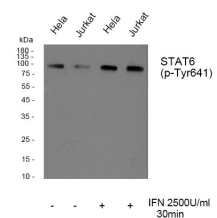
Western blot analysis of lysates from HeLa cells treated with IL-4, using STAT6 (Phospho-Tyr641) Antibody. The lane on the right is blocked with the phospho peptide.



Western blot analysis of various cells using Phospho-Stat6 (Y641) Polyclonal Antibody



Immunohistochemistry analysis of paraffin-embedded human breast carcinoma, using STAT6 (Phospho-Tyr641) Antibody. The picture on the right is blocked with the phospho peptide.



Western blot analysis of Stat6 (phospho Tyr641) Polyclonal Antibody using HeLa, Jurkat cell treated or untreated with IFN 2500U/ml 30', 4°C over night, secondary antibody (cat# NA) (NA was diluted at 1:10000, 37°C 1hour.