

Anti-Phospho-STAT6-Thr645 antibody (612-661 aa) (STJ90415)

STJ90415

GENERAL INFORMATION

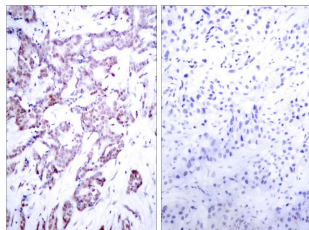
Product Type	Primary antibodies
Short Description	Rabbit polyclonal antibody anti-Phospho-Signal transducer and activator of transcription 6-Thr645 (612-661 aa) is suitable for use in Western Blot, Immunohistochemistry, Immunofluorescence, Immunoprecipitation and ELISA research applications.
Applications	WB/IHC/IF/IP/ELISA
Host/Source	Rabbit
Reactivity	Human/Mouse/Rat

PRODUCT PROPERTIES

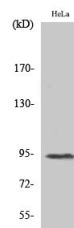
Clonality	Polyclonal
Clone ID	
Concentration	1 mg/mL
Conjugation	Unconjugated
Purification	The antibody was affinity-purified from rabbit antiserum by affinity-chromatography using epitope-specific immunogen.
Dilution Range	WB 1:500-1:2000 IHC 1:100-1:300 IP 2-5 ug mg/lysate ELISA 1:10000 IF 1:50-200
Formulation	Liquid in PBS containing 50% Glycerol, 0.5% BSA and 0.02% Sodium Azide.
Isotype	IgG
Storage Instruction	Store at -20°C for up to 1 year from the date of receipt, and avoid repeat freeze-thaw cycles.

TARGET INFORMATION

Gene ID	6778
Gene Symbol	STAT6
Uniprot ID	STAT6_HUMAN
Immunogen	The antiserum was produced against synthesized peptide derived from the human STAT6 around the phosphorylation site of Thr645 at the amino acid range 612-661
Immunogen Region	612-661 aa
Specificity	Phospho-Stat6 (T645) Polyclonal Antibody detects endogenous levels of Stat6 protein only when phosphorylated at T645.
Immunogen Sequence	



Immunohistochemistry analysis of paraffin-embedded human breast carcinoma, using STAT6 (Phospho-Thr645) Antibody. The picture on the right is blocked with the phospho peptide.



Western blot analysis of various cells using Phospho-Stat6 (T645) Polyclonal Antibody