

Anti-Phospho-SGK1-Ser422 antibody (381-430 aa) (STJ90404)

STJ90404

GENERAL INFORMATION

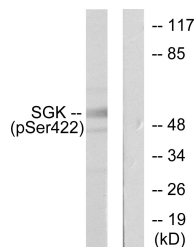
Product Type	Primary antibodies
Short Description	Rabbit polyclonal antibody anti-Phospho-Serine/threonine-protein kinase Sgk1-Ser422 (381-430 aa) is suitable for use in Western Blot, Immunohistochemistry, Immunofluorescence and ELISA research applications.
Applications	WB/IHC/IF/ELISA
Host/Source	Rabbit
Reactivity	Human/Mouse/Rat

PRODUCT PROPERTIES

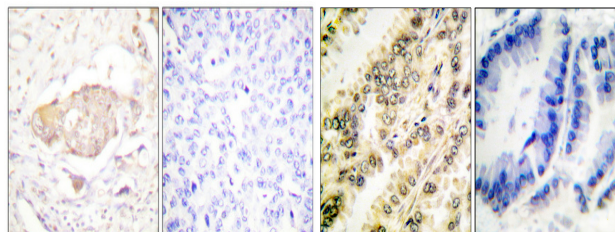
Clonality	Polyclonal
Clone ID	
Concentration	1 mg/mL
Conjugation	Unconjugated
Purification	The antibody was affinity-purified from rabbit antiserum by affinity-chromatography using epitope-specific immunogen.
Dilution	WB 1:500-1:2000
Range	IHC 1:100-1:300 ELISA 1:40000 IF 1:50-200
Formulation	Liquid in PBS containing 50% Glycerol, 0.5% BSA and 0.02% Sodium Azide.
Isotype	IgG
Storage	Store at -20°C for up to 1 year from the date of receipt, and avoid repeat freeze-thaw cycles.
Instruction	

TARGET INFORMATION

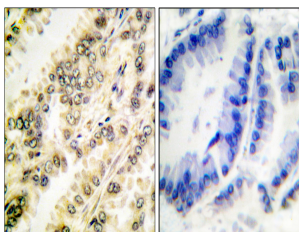
Gene ID	6446
Gene Symbol	SGK1
Uniprot ID	SGK1_HUMAN
Immunogen	The antiserum was produced against synthesized peptide derived from the human SGK around the phosphorylation site of Ser422 at the amino acid range 381-430
Immunogen Region	381-430 aa
Specificity	Phospho-SGK1 (S422) Polyclonal Antibody detects endogenous levels of SGK1 protein only when phosphorylated at S422.
Immunogen Sequence	



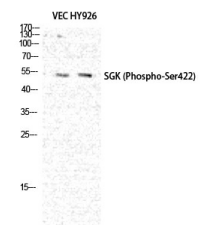
Western blot analysis of lysates from HeLa cells treated with Insulin 0.01U/ml 15', using SGK (Phospho-Ser422) Antibody. The lane on the right is blocked with the phospho peptide.



Immunohistochemical analysis of paraffin-embedded Human breast cancer. Antibody was diluted at 1:100 (4A°C overnight). High-pressure and temperature Tris-EDTA, pH8.0 was used for antigen retrieval. Negative control (right) obtained from antibody was pre-absorbed by immunogen peptide.



Immunohistochemistry analysis of paraffin-embedded human breast carcinoma, using SGK (Phospho-Ser422) Antibody. The picture on the right is blocked with the phospho peptide.



Western blot analysis of VEC HY926 cells using Phospho-SGK1 (S422) Polyclonal Antibody diluted at 1/4 500.