

Anti-Phospho-PLCG1-Tyr783 antibody (751-800 aa) (STJ90394)

STJ90394

GENERAL INFORMATION

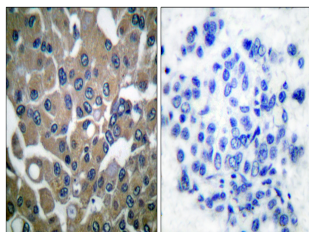
Product Type	Primary antibodies
Short Description	Rabbit polyclonal antibody anti-Phospho-1-phosphatidylinositol 4, 5-bisphosphate phosphodiesterase gamma-1-Tyr783 (751-800 aa) is suitable for use in Western Blot, Immunohistochemistry, Immunofluorescence and ELISA research applications.
Applications	WB/IHC/IF/ELISA
Host/Source	Rabbit
Reactivity	Human/Mouse/Rat/Monkey

PRODUCT PROPERTIES

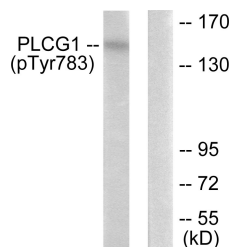
Clonality	Polyclonal
Clone ID	
Concentration	1 mg/mL
Conjugation	Unconjugated
Purification	The antibody was affinity-purified from rabbit antiserum by affinity-chromatography using epitope-specific immunogen.
Dilution	WB 1:500-1:2000
Range	IHC 1:100-1:300 ELISA 1:10000 IF 1:50-200
Formulation	Liquid in PBS containing 50% Glycerol, 0.5% BSA and 0.02% Sodium Azide.
Isotype	IgG
Storage Instruction	Store at -20°C for up to 1 year from the date of receipt, and avoid repeat freeze-thaw cycles.

TARGET INFORMATION

Gene ID	5335
Gene Symbol	PLCG1
Uniprot ID	PLCG1_HUMAN
Immunogen	The antiserum was produced against synthesized peptide derived from the human PLCG1 around the phosphorylation site of Tyr783 at the amino acid range 751-800
Immunogen Region	751-800 aa
Specificity	Phospho-PLC Gamma 1 (Y783) Polyclonal Antibody detects endogenous levels of PLC Gamma 1 protein only when phosphorylated at Y783.
Immunogen Sequence	



Immunohistochemistry analysis of paraffin-embedded human breast carcinoma, using PLCG1 (Phospho-Tyr783) Antibody. The picture on the right is blocked with the phospho peptide.



Western blot analysis of lysates from COS7 cells treated with EGF 200ng/ml 30', using PLCG1 (Phospho-Tyr783) Antibody. The lane on the right is blocked with the phospho peptide.



Western blot analysis of various cells using Phospho-PLC Gamma 1 (Y783) Polyclonal Antibody