

Anti-Phospho-PRKCD-Thr507 antibody (471-520 aa) (STJ90388)

STJ90388

GENERAL INFORMATION

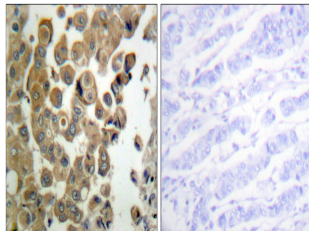
Product Type	Primary antibodies
Short Description	Rabbit polyclonal antibody anti-Phospho-Protein kinase C delta type-Thr507 (471-520 aa) is suitable for use in Western Blot, Immunohistochemistry, Immunofluorescence and ELISA research applications.
Applications	WB/IHC/IF/ELISA
Host/Source	Rabbit
Reactivity	Human/Mouse/Rat

PRODUCT PROPERTIES

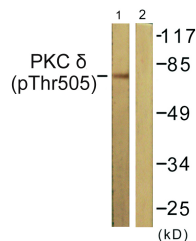
Clonality	Polyclonal
Clone ID	
Concentration	1 mg/mL
Conjugation	Unconjugated
Purification	The antibody was affinity-purified from rabbit antiserum by affinity-chromatography using epitope-specific immunogen.
Dilution	WB 1:500-1:2000
Range	IHC 1:100-1:300 ELISA 1:20000 IF 1:50-200
Formulation	Liquid in PBS containing 50% Glycerol, 0.5% BSA and 0.02% Sodium Azide.
Isotype	IgG
Storage Instruction	Store at -20°C for up to 1 year from the date of receipt, and avoid repeat freeze-thaw cycles.

TARGET INFORMATION

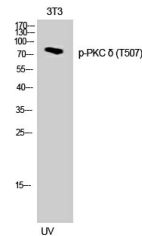
Gene ID	5580
Gene Symbol	PRKCD
Uniprot ID	KPCD_HUMAN
Immunogen	The antiserum was produced against synthesized peptide derived from the human PKC delta around the phosphorylation site of Thr505 at the amino acid range 471-520
Immunogen Region	471-520 aa
Specificity	Phospho-PKC Delta (T507) Polyclonal Antibody detects endogenous levels of PKC Delta protein only when phosphorylated at T507.
Immunogen Sequence	



Immunohistochemistry analysis of paraffin-embedded human breast carcinoma, using PKC delta (Phospho-Thr505) Antibody. The picture on the right is blocked with the phospho peptide.



Western blot analysis of lysates from NIH/3T3 cells treated with UV 15', using PKC delta (Phospho-Thr505) Antibody. The lane on the right is blocked with the phospho peptide.



Western blot analysis of 3T3 cells using Phospho-PKC Delta (T507) Polyclonal Antibody