

Anti-Phospho-RPS6KB1-Ser434 antibody (401-450 aa) (STJ90373)

STJ90373

GENERAL INFORMATION

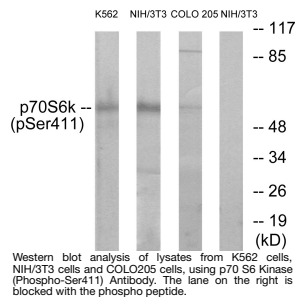
Product Type	Primary antibodies
Short Description	Rabbit polyclonal antibody anti-Phospho-Ribosomal protein S6 kinase beta-1-Ser434 (401-450 aa) is suitable for use in Western Blot, Immunohistochemistry, Immunofluorescence and ELISA research applications.
Applications	WB/IHC/IF/ELISA
Host/Source	Rabbit
Reactivity	Human/Mouse/Rat/Monkey

PRODUCT PROPERTIES

Clonality	Polyclonal
Clone ID	
Concentration	1 mg/mL
Conjugation	Unconjugated
Purification	The antibody was affinity-purified from rabbit antiserum by affinity-chromatography using epitope-specific immunogen.
Dilution	WB 1:500-1:2000
Range	IHC 1:100-1:300 ELISA 1:10000 IF 1:50-200
Formulation	Liquid in PBS containing 50% Glycerol, 0.5% BSA and 0.02% Sodium Azide.
Isotype	IgG
Storage Instruction	Store at -20°C for up to 1 year from the date of receipt, and avoid repeat freeze-thaw cycles.

TARGET INFORMATION

Gene ID	6198
Gene Symbol	RPS6KB1
Uniprot ID	KS6B1_HUMAN
Immunogen	The antiserum was produced against synthesized peptide derived from the human p70 S6 Kinase around the phosphorylation site of Ser434 at the amino acid range 401-450
Immunogen Region	401-450 aa
Specificity	Phospho-p70 S6 kinase Alpha (S434) Polyclonal Antibody detects endogenous levels of p70 S6 kinase Alpha protein only when phosphorylated at S434.
Immunogen Sequence	



This product is suitable for in-vitro studies under the RESEARCH USE ONLY [RUO] licence. This product must not be used as for diagnostic or other medical purposes.
St John's Laboratory Ltd, Knowledge Dock Business Centre, University Way, London, E16 2RD | Tel: 0208 223 3081