

Anti-Phospho-TP53-Ser46 antibody (11-60 aa) (STJ90369)

STJ90369

GENERAL INFORMATION

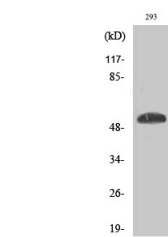
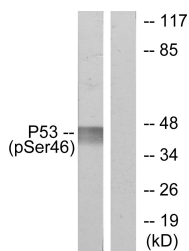
Product Type	Primary antibodies
Short Description	Rabbit polyclonal antibody anti-Phospho-Cellular tumor antigen p53-Ser46 (11-60 aa) is suitable for use in Western Blot and ELISA research applications.
Applications	WB/ELISA
Host/Source	Rabbit
Reactivity	Human/Monkey

PRODUCT PROPERTIES

Clonality	Polyclonal
Clone ID	
Concentration	1 mg/mL
Conjugation	Unconjugated
Purification	The antibody was affinity-purified from rabbit antiserum by affinity-chromatography using epitope-specific immunogen.
Dilution Range	WB 1:500-1:2000 ELISA 1:5000
Formulation	Liquid in PBS containing 50% Glycerol, 0.5% BSA and 0.02% Sodium Azide.
Isotype	IgG
Storage	Store at -20°C for up to 1 year from the date of receipt, and avoid repeat freeze-thaw cycles.
Instruction	

TARGET INFORMATION

Gene ID	7157
Gene Symbol	TP53
Uniprot ID	P53_HUMAN
Immunogen	The antiserum was produced against synthesized peptide derived from the human p53 around the phosphorylation site of Ser46 at the amino acid range 11-60
Immunogen Region	11-60 aa
Specificity	Phospho-p53 (S46) Polyclonal Antibody detects endogenous levels of p53 protein only when phosphorylated at S46.
Immunogen Sequence	



Western blot analysis of lysates from 293 cells treated with UV, using p53 (Phospho-Ser46) Antibody. The lane on the right is blocked with the phospho peptide.

Western blot analysis of various cells using Phospho-p53 (S46) Polyclonal Antibody diluted at 1:1000.