

Anti-Phospho-TP53-Ser315 antibody (281-330 aa) (STJ90367)

STJ90367

GENERAL INFORMATION

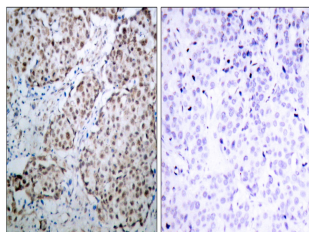
Product Type	Primary antibodies
Short Description	Rabbit polyclonal antibody anti-Phospho-Cellular tumor antigen p53-Ser315 (281-330 aa) is suitable for use in Western Blot, Immunohistochemistry, Immunofluorescence, Immunoprecipitation and ELISA research applications.
Applications	WB/IHC/IF/IP/ELISA
Host/Source	Rabbit
Reactivity	Human/Rat/Mouse

PRODUCT PROPERTIES

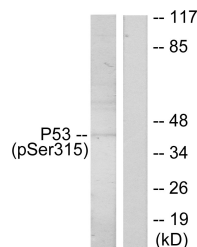
Clonality	Polyclonal
Clone ID	
Concentration	1 mg/mL
Conjugation	Unconjugated
Purification	The antibody was affinity-purified from rabbit antiserum by affinity-chromatography using epitope-specific immunogen.
Dilution Range	WB 1:500-1:2000 IHC 1:100-1:300 IP 2-5 ug mg/lysate ELISA 1:10000 IF 1:50-200
Formulation	Liquid in PBS containing 50% Glycerol, 0.5% BSA and 0.02% Sodium Azide.
Isotype	IgG
Storage	Store at -20°C for up to 1 year from the date of receipt, and avoid repeat freeze-thaw cycles.
Instruction	

TARGET INFORMATION

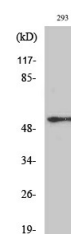
Gene ID	7157
Gene Symbol	TP53
Uniprot ID	P53_HUMAN
Immunogen	The antiserum was produced against synthesized peptide derived from the human p53 around the phosphorylation site of Ser315 at the amino acid range 281-330
Immunogen Region	281-330 aa
Specificity	Phospho-p53 (S315) Polyclonal Antibody detects endogenous levels of p53 protein only when phosphorylated at S315.
Immunogen Sequence	



Immunohistochemistry analysis of paraffin-embedded human breast carcinoma, using p53 (Phospho-Ser315) Antibody. The picture on the right is blocked with the phospho peptide.



Western blot analysis of lysates from ovary cancer, using p53 (Phospho-Ser315) Antibody. The lane on the right is blocked with the phospho peptide.



Western blot analysis of various cells using Phospho-p53 (S315) Polyclonal Antibody diluted at 1:1000