

Anti-Phospho-TP53-Ser20 antibody (10-59 aa) (STJ90366)

STJ90366

GENERAL INFORMATION

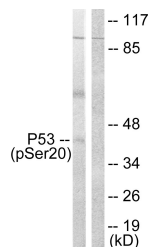
Product Type	Primary antibodies
Short Description	Rabbit polyclonal antibody anti-Phospho-Cellular tumor antigen p53-Ser20 (10-59 aa) is suitable for use in Western Blot, Immunohistochemistry, Immunofluorescence and ELISA research applications.
Applications	WB/IHC/IF/ELISA
Host/Source	Rabbit
Reactivity	Human/Mouse/Rat/Monkey

PRODUCT PROPERTIES

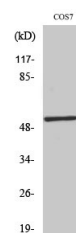
Clonality	Polyclonal
Clone ID	
Concentration	1 mg/mL
Conjugation	Unconjugated
Purification	The antibody was affinity-purified from rabbit antiserum by affinity-chromatography using epitope-specific immunogen.
Dilution	WB 1:500-1:2000
Range	IHC 1:100-1:300 ELISA 1:5000 IF 1:50-200
Formulation	Liquid in PBS containing 50% Glycerol, 0.5% BSA and 0.02% Sodium Azide.
Isotype	IgG
Storage Instruction	Store at -20°C for up to 1 year from the date of receipt, and avoid repeat freeze-thaw cycles.

TARGET INFORMATION

Gene ID	7157
Gene Symbol	TP53
Uniprot ID	P53_HUMAN
Immunogen	The antiserum was produced against synthesized peptide derived from the human p53 around the phosphorylation site of Ser20 at the amino acid range 10-59
Immunogen Region	10-59 aa
Specificity	Phospho-p53 (S20) Polyclonal Antibody detects endogenous levels of p53 protein only when phosphorylated at S20.
Immunogen Sequence	



Western blot analysis of lysates from COS7 cells treated with UV 5' using p53 (Phospho-Ser20) Antibody. The lane on the right is blocked with the phospho peptide.



Western blot analysis of various cells using Phospho-p53 (S20) Polyclonal Antibody.

This product is suitable for in-vitro studies under the RESEARCH USE ONLY [RUO] licence. This product must not be used as for diagnostic or other medical purposes.
St John's Laboratory Ltd, Knowledge Dock Business Centre, University Way, London, E16 2RD | Tel: 0208 223 3081