

Anti-Phospho-MAPK14-Tyr182 antibody (147-196 aa) (STJ90363)

STJ90363

GENERAL INFORMATION

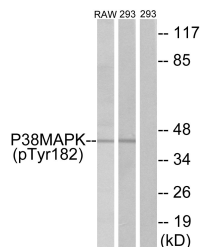
Product Type	Primary antibodies
Short Description	Rabbit polyclonal antibody anti-Phospho-Mitogen-activated protein kinase 14-Tyr182 (147-196 aa) is suitable for use in Western Blot, Immunohistochemistry, Immunofluorescence and ELISA research applications.
Applications	WB/IHC/IF/ELISA
Host/Source	Rabbit
Reactivity	Human/Mouse/Rat

PRODUCT PROPERTIES

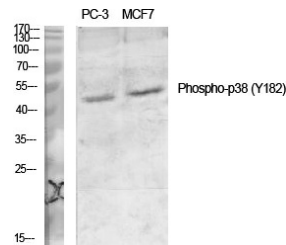
Clonality	Polyclonal
Clone ID	
Concentration	1 mg/mL
Conjugation	Unconjugated
Purification	The antibody was affinity-purified from rabbit antiserum by affinity-chromatography using epitope-specific immunogen.
Dilution Range	WB 1:500-1:2000 IHC 1:100-1:300 ELISA 1:10000 IF 1:50-200
Formulation	Liquid in PBS containing 50% Glycerol, 0.5% BSA and 0.02% Sodium Azide.
Isotype	IgG
Storage Instruction	Store at -20°C for up to 1 year from the date of receipt, and avoid repeat freeze-thaw cycles.

TARGET INFORMATION

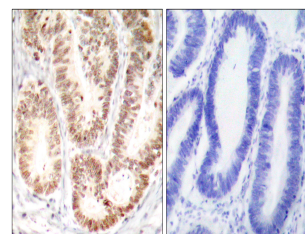
Gene ID	1432
Gene Symbol	MAPK14
Uniprot ID	MK14_HUMAN
Immunogen	The antiserum was produced against synthesized peptide derived from the human p38 MAPK around the phosphorylation site of Tyr182 at the amino acid range 147-196
Immunogen Region	147-196 aa
Specificity	Phospho-p38 (Y182) Polyclonal Antibody detects endogenous levels of p38 protein only when phosphorylated at Y182.
Immunogen Sequence	



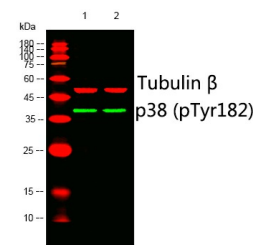
Western blot analysis of lysates from RAW264.7 cells and 293 cells, using p38 MAPK (Phospho-Tyr182) Antibody. The lane on the right is blocked with the phospho peptide.



Western blot analysis of various cells using Phospho-p38 (Y182) Polyclonal Antibody diluted at 1:1000



Immunohistochemistry analysis of paraffin-embedded human colon carcinoma, using p38 MAPK (Phospho-Tyr182) Antibody. The picture on the right is blocked with the phospho peptide.



Western blot analysis of lysates from 1) PC-3, 2) MCF-7 cells. (Green) primary antibody was diluted at 1:1000, 4A°C over night, Dylight 800 secondary antibody (NA) was diluted at 1:10000, 37A°C 1hour. (Red) Tubulin Beta monoclonal antibody (SC3) (STJ96532) antibody was diluted at 1:5000 as loading control, 4A°C over night, Dylight 680 secondary antibody (NA) was diluted at 1:10000, 37A°C 1hour.

This product is suitable for in-vitro studies under the RESEARCH USE ONLY [RUO] licence. This product must not be used as for diagnostic or other medical purposes.
St John's Laboratory Ltd, Knowledge Dock Business Centre, University Way, London, E16 2RD | Tel: 0208 223 3081