

Anti-Phospho-CDKN1B-Ser10 antibody (1-50 aa) (STJ90361)

STJ90361

GENERAL INFORMATION

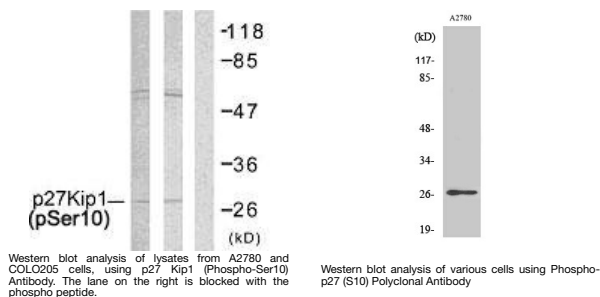
Product Type	Primary antibodies
Short Description	Rabbit polyclonal antibody anti-Phospho-Cyclin-dependent kinase inhibitor 1B-Ser10 (1-50 aa) is suitable for use in Western Blot and ELISA research applications.
Applications	WB/ELISA
Host/Source	Rabbit
Reactivity	Human/Mouse/Rat

PRODUCT PROPERTIES

Clonality	Polyclonal
Clone ID	
Concentration	1 mg/mL
Conjugation	Unconjugated
Purification	The antibody was affinity-purified from rabbit antiserum by affinity-chromatography using epitope-specific immunogen.
Dilution Range	WB 1:500-1:2000 ELISA 1:10000
Formulation	Liquid in PBS containing 50% Glycerol, 0.5% BSA and 0.02% Sodium Azide.
Isotype	IgG
Storage	Store at -20°C for up to 1 year from the date of receipt, and avoid repeat freeze-thaw cycles.
Instruction	

TARGET INFORMATION

Gene ID	1027
Gene Symbol	CDKN1B
Uniprot ID	CDN1B_HUMAN
Immunogen	The antiserum was produced against synthesized peptide derived from the human p27 Kip1 around the phosphorylation site of Ser10 at the amino acid range 1-50
Immunogen Region	1-50 aa
Specificity	Phospho-p27 (S10) Polyclonal Antibody detects endogenous levels of p27 protein only when phosphorylated at S10.
Immunogen Sequence	



This product is suitable for in-vitro studies under the RESEARCH USE ONLY [RUO] licence. This product must not be used as for diagnostic or other medical purposes.
St John's Laboratory Ltd, Knowledge Dock Business Centre, University Way, London, E16 2RD | Tel: 0208 223 3081