

Anti-Phospho-STMN1-Ser38 antibody (5-54 aa) (STJ90359)

STJ90359

GENERAL INFORMATION

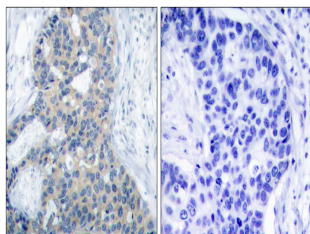
Product Type	Primary antibodies
Short Description	Rabbit polyclonal antibody anti-Phospho-Stathmin-Ser38 (5-54 aa) is suitable for use in Western Blot, Immunohistochemistry, Immunofluorescence and ELISA research applications.
Applications	WB/IHC/IF/ELISA
Host/Source	Rabbit
Reactivity	Human/Mouse/Rat/Monkey

PRODUCT PROPERTIES

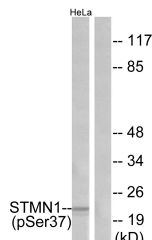
Clonality	Polyclonal
Clone ID	
Concentration	1 mg/mL
Conjugation	Unconjugated
Purification	The antibody was affinity-purified from rabbit antiserum by affinity-chromatography using epitope-specific immunogen.
Dilution Range	WB 1:500-1:2000 IHC 1:100-1:300 ELISA 1:20000 IF 1:50-200
Formulation	Liquid in PBS containing 50% Glycerol, 0.5% BSA and 0.02% Sodium Azide.
Isotype	IgG
Storage Instruction	Store at -20°C for up to 1 year from the date of receipt, and avoid repeat freeze-thaw cycles.

TARGET INFORMATION

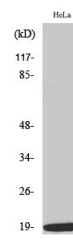
Gene ID	3925
Gene Symbol	STMN1
Uniprot ID	STMN1_HUMAN
Immunogen	The antiserum was produced against synthesized peptide derived from the human Stathmin 1 around the phosphorylation site of Ser37 at the amino acid range 5-54
Immunogen Region	5-54 aa
Specificity	Phospho-Op18 (S38) Polyclonal Antibody detects endogenous levels of Op18 protein only when phosphorylated at S38.
Immunogen Sequence	



Immunohistochemistry analysis of paraffin-embedded human breast carcinoma, using Stathmin 1 (Phospho-Ser37) Antibody. The picture on the right is blocked with the phospho peptide.



Western blot analysis of lysates from HeLa cells treated with nocodazole, using Stathmin 1 (Phospho-Ser37) Antibody. The lane on the right is blocked with the phospho peptide.



Western blot analysis of various cells using Phospho-Op18 (S38) Polyclonal Antibody