

Anti-Phospho-NBN-Ser343 antibody (310-359 aa) (STJ90354)

STJ90354

GENERAL INFORMATION

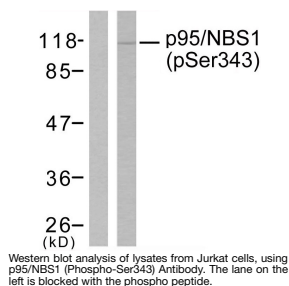
Product Type	Primary antibodies
Short Description	Rabbit polyclonal antibody anti-Phospho-Nibrin-Ser343 (310-359 aa) is suitable for use in Western Blot and ELISA research applications.
Applications	WB/ELISA
Host/Source	Rabbit
Reactivity	Human/Rat

PRODUCT PROPERTIES

Clonality	Polyclonal
Clone ID	
Concentration	1 mg/mL
Conjugation	Unconjugated
Purification	The antibody was affinity-purified from rabbit antiserum by affinity-chromatography using epitope-specific immunogen.
Dilution Range	WB 1:500-1:2000 ELISA 1:5000
Formulation	Liquid in PBS containing 50% Glycerol, 0.5% BSA and 0.02% Sodium Azide.
Isotype	IgG
Storage	Store at -20°C for up to 1 year from the date of receipt, and avoid repeat freeze-thaw cycles.
Instruction	

TARGET INFORMATION

Gene ID	4683
Gene Symbol	NBN
Uniprot ID	NBN_HUMAN
Immunogen	The antiserum was produced against synthesized peptide derived from the human p95/NBS1 around the phosphorylation site of Ser343 at the amino acid range 310-359
Immunogen Region	310-359 aa
Specificity	Phospho-Nibrin (S343) Polyclonal Antibody detects endogenous levels of Nibrin protein only when phosphorylated at S343.
Immunogen Sequence	



This product is suitable for in-vitro studies under the RESEARCH USE ONLY [RUO] licence. This product must not be used as for diagnostic or other medical purposes.
St John's Laboratory Ltd, Knowledge Dock Business Centre, University Way, London, E16 2RD | Tel: 0208 223 3081