

Anti-Phospho-RELA-Ser529 antibody (496-545 aa) (STJ90350)

STJ90350

GENERAL INFORMATION

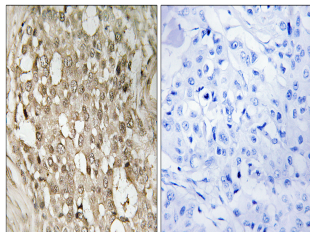
Product Type	Primary antibodies
Short Description	Rabbit polyclonal antibody anti-Phospho-Transcription factor p65-Ser529 (496-545 aa) is suitable for use in Western Blot, Immunohistochemistry, Immunofluorescence and ELISA research applications.
Applications	WB/IHC/IF/ELISA
Host/Source	Rabbit
Reactivity	Human/Mouse

PRODUCT PROPERTIES

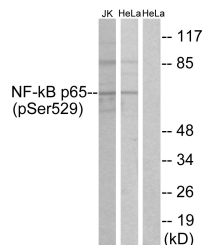
Clonality	Polyclonal
Clone ID	
Concentration	1 mg/mL
Conjugation	Unconjugated
Purification	The antibody was affinity-purified from rabbit antiserum by affinity-chromatography using epitope-specific immunogen.
Dilution	WB 1:500-1:2000
Range	IHC 1:100-1:300 ELISA 1:10000 IF 1:50-200
Formulation	Liquid in PBS containing 50% Glycerol, 0.5% BSA and 0.02% Sodium Azide.
Isotype	IgG
Storage Instruction	Store at -20°C for up to 1 year from the date of receipt, and avoid repeat freeze-thaw cycles.

TARGET INFORMATION

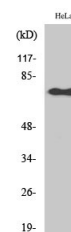
Gene ID	5970
Gene Symbol	RELA
Uniprot ID	TF65_HUMAN
Immunogen	The antiserum was produced against synthesized peptide derived from the human NF-kappaB p65 around the phosphorylation site of Ser529 at the amino acid range 496-545
Immunogen Region	496-545 aa
Specificity	Phospho-NF Kappa B-p65 (S529) Polyclonal Antibody detects endogenous levels of NF Kappa B-p65 protein only when phosphorylated at S529.
Immunogen Sequence	



Immunohistochemistry analysis of paraffin-embedded human breast carcinoma, using NF-kappaB p65 (Phospho-Ser529) Antibody. The picture on the right is blocked with the phospho peptide.



Western blot analysis of lysates from HeLa and Jurkat cells, using NF-kappaB p65 (Phospho-Ser529) Antibody. The lane on the right is blocked with the phospho peptide.



Western blot analysis of various cells using Phospho-NF Kappa B-p65 (S529) Polyclonal Antibody diluted at 1/14 2000