

Anti-Phospho-NFKB1-Ser932 antibody (899-948 aa) (STJ90345)

STJ90345

GENERAL INFORMATION

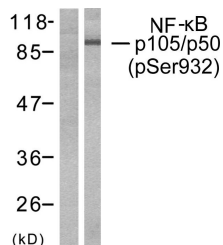
Product Type	Primary antibodies
Short Description	Rabbit polyclonal antibody anti-Phospho-Nuclear factor NF-kappa-B p105 subunit-Ser932 (899-948 aa) is suitable for use in Western Blot, Immunohistochemistry, Immunofluorescence and ELISA research applications.
Applications	WB/IHC/IF/ELISA
Host/Source	Rabbit
Reactivity	Human/Mouse/Rat

PRODUCT PROPERTIES

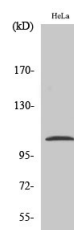
Clonality	Polyclonal
Clone ID	
Concentration	1 mg/mL
Conjugation	Unconjugated
Purification	The antibody was affinity-purified from rabbit antiserum by affinity-chromatography using epitope-specific immunogen.
Dilution Range	WB 1:500-1:2000 IHC 1:100-1:300 ELISA 1:10000 IF 1:50-200
Formulation	Liquid in PBS containing 50% Glycerol, 0.5% BSA and 0.02% Sodium Azide.
Isotype	IgG
Storage Instruction	Store at -20°C for up to 1 year from the date of receipt, and avoid repeat freeze-thaw cycles.

TARGET INFORMATION

Gene ID	4790
Gene Symbol	NFKB1
Uniprot ID	NFKB1_HUMAN
Immunogen	The antiserum was produced against synthesized peptide derived from the human NF-kappaB p105/p50 around the phosphorylation site of Ser932 at the amino acid range 899-948
Immunogen Region	899-948 aa
Specificity	Phospho-NF Kappa B-p105 (S932) Polyclonal Antibody detects endogenous levels of NF Kappa B-p105 protein only when phosphorylated at S932.
Immunogen Sequence	



Western blot analysis of lysates from HeLa cells treated with CA+TNF 20ng/ml 10', using NF-kappaB p105/p50 (Phospho-Ser932) Antibody. The lane on the left is blocked with the phospho peptide.



Western blot analysis of various cells using Phospho-NF Kappa B-p105 (S932) Polyclonal Antibody

This product is suitable for in-vitro studies under the RESEARCH USE ONLY [RUO] licence. This product must not be used as for diagnostic or other medical purposes.
St John's Laboratory Ltd, Knowledge Dock Business Centre, University Way, London, E16 2RD | Tel: 0208 223 3081