

## Anti-Phospho-NF2-Ser518 antibody (485-534 aa) (STJ90340)

STJ90340

### GENERAL INFORMATION

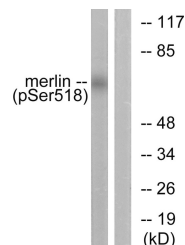
<b>Product Type</b>	Primary antibodies
<b>Short Description</b>	Rabbit polyclonal antibody anti-Phospho-Merlin-Ser518 (485-534 aa) is suitable for use in Western Blot, Immunohistochemistry, Immunofluorescence and ELISA research applications.
<b>Applications</b>	WB/IHC/IF/ELISA
<b>Host/Source</b>	Rabbit
<b>Reactivity</b>	Human/Mouse/Rat

### PRODUCT PROPERTIES

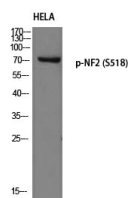
<b>Clonality</b>	Polyclonal
<b>Clone ID</b>	
<b>Concentration</b>	1 mg/mL
<b>Conjugation</b>	Unconjugated
<b>Purification</b>	The antibody was affinity-purified from rabbit antiserum by affinity-chromatography using epitope-specific immunogen.
<b>Dilution Range</b>	WB 1:500-1:2000 IHC 1:100-1:300 IF 1:200-1:1000 ELISA 1:5000
<b>Formulation</b>	Liquid in PBS containing 50% Glycerol, 0.5% BSA and 0.02% Sodium Azide.
<b>Isotype</b>	IgG
<b>Storage</b>	Store at -20°C for up to 1 year from the date of receipt, and avoid repeat freeze-thaw cycles.
<b>Instruction</b>	

### TARGET INFORMATION

<b>Gene ID</b>	4771
<b>Gene Symbol</b>	NF2
<b>Uniprot ID</b>	MERL_HUMAN
<b>Immunogen</b>	The antiserum was produced against synthesized peptide derived from the human Merlin around the phosphorylation site of Ser518 at the amino acid range 485-534
<b>Immunogen Region</b>	485-534 aa
<b>Specificity</b>	Phospho-NF2 (S518) Polyclonal Antibody detects endogenous levels of NF2 protein only when phosphorylated at S518.
<b>Immunogen Sequence</b>	



Western blot analysis of HUVEC cells treated with IFN-alpha 1000U/ml 18h, using Merlin (Phospho-Ser518) Antibody. The lane on the right is blocked with the phospho peptide.



Western blot analysis of HELA cells using p-NF2 (S518) antibody. Antibody was diluted at 1:1000

This product is suitable for in-vitro studies under the RESEARCH USE ONLY [RUO] licence. This product must not be used as for diagnostic or other medical purposes.  
St John's Laboratory Ltd, Knowledge Dock Business Centre, University Way, London, E16 2RD | Tel: 0208 223 3081