

Anti-Phospho-MAP2K1-Thr292 antibody (261-310 aa) (STJ90326)

STJ90326

GENERAL INFORMATION

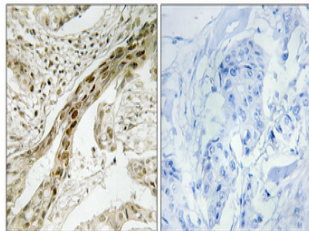
Product Type	Primary antibodies
Short Description	Rabbit polyclonal antibody anti-Phospho-Dual specificity mitogen-activated protein kinase kinase 1-Thr292 (261-310 aa) is suitable for use in Western Blot, Immunohistochemistry, Immunofluorescence and ELISA research applications.
Applications	WB/IHC/IF/ELISA
Host/Source	Rabbit
Reactivity	Human/Mouse/Rat

PRODUCT PROPERTIES

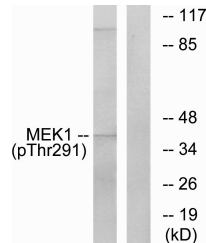
Clonality	Polyclonal
Clone ID	
Concentration	1 mg/mL
Conjugation	Unconjugated
Purification	The antibody was affinity-purified from rabbit antiserum by affinity-chromatography using epitope-specific immunogen.
Dilution Range	WB 1:500-1:2000 IHC 1:100-1:300 IF 1:200-1:1000 ELISA 1:10000
Formulation	Liquid in PBS containing 50% Glycerol, 0.5% BSA and 0.02% Sodium Azide.
Isotype	IgG
Storage Instruction	Store at -20°C for up to 1 year from the date of receipt, and avoid repeat freeze-thaw cycles.

TARGET INFORMATION

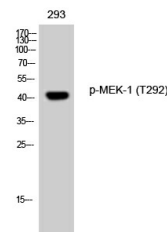
Gene ID	5604
Gene Symbol	MAP2K1
Uniprot ID	MP2K1_HUMAN
Immunogen	The antiserum was produced against synthesized peptide derived from the human MEK1 around the phosphorylation site of Thr291 at the amino acid range 261-310
Immunogen Region	261-310 aa
Specificity	Phospho-MEK-1 (T292) Polyclonal Antibody detects endogenous levels of MEK-1 protein only when phosphorylated at T292.
Immunogen Sequence	



Immunohistochemical analysis of paraffin-embedded Human breast cancer. Antibody was diluted at 1:100 (4A°C overnight). High-pressure and temperature Tris-EDTA, pH8.0 was used for antigen retrieval. Negative control (right) obtained from antibody was pre-absorbed by immunogen peptide.



Western blot analysis of lysates from K562 cells, using MEK1 (Phospho-Thr291) Antibody. The lane on the right is blocked with the phospho peptide.



Western blot analysis of 293 cells using Phospho-MEK-1 (T292) Polyclonal Antibody diluted at 1/4 1000