

Anti-Phospho-LIMK2-Thr505 antibody (STJ90322)

STJ90322

GENERAL INFORMATION

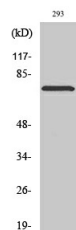
Product Type	Primary antibodies
Short Description	Rabbit polyclonal antibody anti-Phospho-LIM domain kinase 2-Thr505 is suitable for use in Western Blot, Immunohistochemistry, Immunofluorescence and ELISA research applications.
Applications	WB/IHC/IF/ELISA
Host/Source	Rabbit
Reactivity	Human/Mouse/Rat

PRODUCT PROPERTIES

Clonality	Polyclonal
Clone ID	
Concentration	1 mg/mL
Conjugation	Unconjugated
Purification	The antibody was affinity-purified from rabbit antiserum by affinity-chromatography using epitope-specific immunogen.
Dilution Range	WB 1:500-1:2000 IHC 1:100-1:300 IF 1:200-1:1000 ELISA 1:10000
Formulation	Liquid in PBS containing 50% Glycerol, 0.5% BSA and 0.02% Sodium Azide.
Isotype	IgG
Storage Instruction	Store at -20°C for up to 1 year from the date of receipt, and avoid repeat freeze-thaw cycles.

TARGET INFORMATION

Gene ID	3985
Gene Symbol	LIMK2
Uniprot ID	LIMK2_HUMAN
Immunogen	Synthesized phospho-peptide around the phosphorylation site of human LIMK-2 (phospho Thr505)
Immunogen Region	
Specificity	Phospho-LIMK-2 (T505) Polyclonal Antibody detects endogenous levels of LIMK-2 protein only when phosphorylated at T505.
Immunogen Sequence	



Western blot analysis of various cells using Phospho-LIMK-2 (T505) Polyclonal Antibody