

## Anti-Phospho-NFKBIA-Tyr42 antibody (9-58 aa) (STJ90312)

STJ90312

### GENERAL INFORMATION

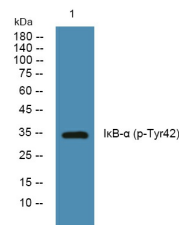
<b>Product Type</b>	Primary antibodies
<b>Short Description</b>	Rabbit polyclonal antibody anti-Phospho-NF-kappa-B inhibitor alpha-Tyr42 (9-58 aa) is suitable for use in Western Blot, Immunohistochemistry, Immunofluorescence and ELISA research applications.
<b>Applications</b>	WB/IHC/IF/ELISA
<b>Host/Source</b>	Rabbit
<b>Reactivity</b>	Human/Mouse/Rat

### PRODUCT PROPERTIES

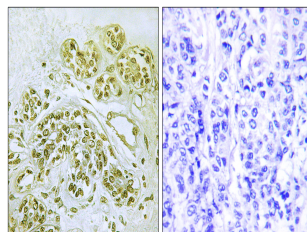
<b>Clonality</b>	Polyclonal
<b>Clone ID</b>	
<b>Concentration</b>	1 mg/mL
<b>Conjugation</b>	Unconjugated
<b>Purification</b>	The antibody was affinity-purified from rabbit antiserum by affinity-chromatography using epitope-specific immunogen.
<b>Dilution Range</b>	WB 1:500-1:2000 IHC 1:100-1:300 ELISA 1:10000 IF 1:50-200
<b>Formulation</b>	Liquid in PBS containing 50% Glycerol, 0.5% BSA and 0.02% Sodium Azide.
<b>Isotype</b>	IgG
<b>Storage Instruction</b>	Store at -20°C for up to 1 year from the date of receipt, and avoid repeat freeze-thaw cycles.

### TARGET INFORMATION

<b>Gene ID</b>	4792
<b>Gene Symbol</b>	NFKBIA
<b>Uniprot ID</b>	IKBA_HUMAN
<b>Immunogen</b>	The antiserum was produced against synthesized peptide derived from the human IkappaB-alpha around the phosphorylation site of Tyr42 at the amino acid range 9-58
<b>Immunogen Region</b>	9-58 aa
<b>Specificity</b>	Phospho-I Kappa B-Alpha (Y42) Polyclonal Antibody detects endogenous levels of I Kappa B-Alpha protein only when phosphorylated at Y42.
<b>Immunogen Sequence</b>	



Western blot analysis of lysates from Jarkat cells, primary antibody was diluted at 1:1000, 4A°C over night



Immunohistochemistry analysis of paraffin-embedded human breast carcinoma, using IkappaB-alpha (Phospho-Tyr42) Antibody. The picture on the right is blocked with the phospho peptide.