

Anti-Phospho-IRS1-Ser639 antibody (605-654 aa) (STJ90309)

STJ90309

GENERAL INFORMATION

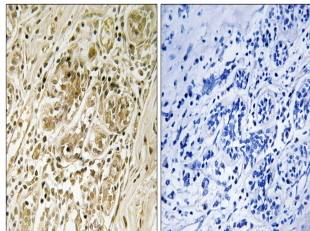
Product Type	Primary antibodies
Short Description	Rabbit polyclonal antibody anti-Phospho-Insulin receptor substrate 1-Ser639 (605-654 aa) is suitable for use in Western Blot, Immunohistochemistry, Immunofluorescence and ELISA research applications.
Applications	WB/IHC/IF/ELISA
Host/Source	Rabbit
Reactivity	Human/Mouse/Rat

PRODUCT PROPERTIES

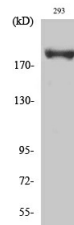
Clonality	Polyclonal
Clone ID	
Concentration	1 mg/mL
Conjugation	Unconjugated
Purification	The antibody was affinity-purified from rabbit antiserum by affinity-chromatography using epitope-specific immunogen.
Dilution Range	WB 1:500-1:2000 IHC 1:100-1:300 ELISA 1:20000 IF 1:50-200
Formulation	Liquid in PBS containing 50% Glycerol, 0.5% BSA and 0.02% Sodium Azide.
Isotype	IgG
Storage Instruction	Store at -20°C for up to 1 year from the date of receipt, and avoid repeat freeze-thaw cycles.

TARGET INFORMATION

Gene ID	3667
Gene Symbol	IRS1
Uniprot ID	IRS1_HUMAN
Immunogen	The antiserum was produced against synthesized peptide derived from the human IRS-1 around the phosphorylation site of Ser639 at the amino acid range 605-654
Immunogen Region	605-654 aa
Specificity	Phospho-IRS-1 (S639) Polyclonal Antibody detects endogenous levels of IRS-1 protein only when phosphorylated at S639.
Immunogen Sequence	



Immunohistochemistry analysis of paraffin-embedded human breast carcinoma, using IRS-1 (Phospho-Ser639) Antibody. The picture on the right is blocked with the phospho peptide.



Western blot analysis of various cells using Phospho-IRS-1 (S639) Polyclonal Antibody diluted at 1/1000.