

Anti-Phospho-IRS1-Ser1101 antibody (1067-1116 aa) (STJ90305)

STJ90305

GENERAL INFORMATION

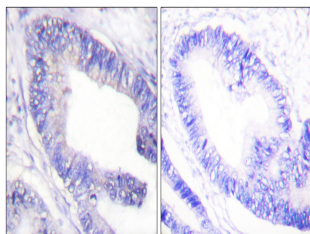
Product Type	Primary antibodies
Short Description	Rabbit polyclonal antibody anti-Phospho-Insulin receptor substrate 1-Ser1101 (1067-1116 aa) is suitable for use in Western Blot, Immunohistochemistry, Immunofluorescence and ELISA research applications.
Applications	WB/IHC/IF/ELISA
Host/Source	Rabbit
Reactivity	Human/Mouse/Rat/Monkey

PRODUCT PROPERTIES

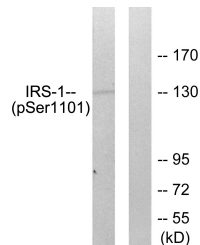
Clonality	Polyclonal
Clone ID	
Concentration	1 mg/mL
Conjugation	Unconjugated
Purification	The antibody was affinity-purified from rabbit antiserum by affinity-chromatography using epitope-specific immunogen.
Dilution Range	WB 1:500-1:2000 IHC 1:100-1:300 ELISA 1:20000 IF 1:50-200
Formulation	Liquid in PBS containing 50% Glycerol, 0.5% BSA and 0.02% Sodium Azide.
Isotype	IgG
Storage Instruction	Store at -20°C for up to 1 year from the date of receipt, and avoid repeat freeze-thaw cycles.

TARGET INFORMATION

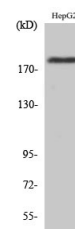
Gene ID	3667
Gene Symbol	IRS1
Uniprot ID	IRS1_HUMAN
Immunogen	The antiserum was produced against synthesized peptide derived from the human IRS-1 around the phosphorylation site of Ser1101 at the amino acid range 1067-1116
Immunogen Region	1067-1116 aa
Specificity	Phospho-IRS-1 (S1101) Polyclonal Antibody detects endogenous levels of IRS-1 protein only when phosphorylated at S1101.
Immunogen Sequence	



Immunohistochemistry analysis of paraffin-embedded human colon carcinoma, using IRS-1 (Phospho-Ser1101) Antibody. The picture on the right is blocked with the phospho peptide.



Western blot analysis of lysates from COS7 cells treated with Calyculin A 50ng/ml 30', using IRS-1 (Phospho-Ser1101) Antibody. The lane on the right is blocked with the phospho peptide.



Western blot analysis of various cells using Phospho-IRS-1 (S1101) Polyclonal Antibody diluted at 1:500