

Anti-Phospho-GSK3 Alpha/Beta-Tyr279/216 antibody (246-295 aa) (STJ90283)

STJ90283

GENERAL INFORMATION

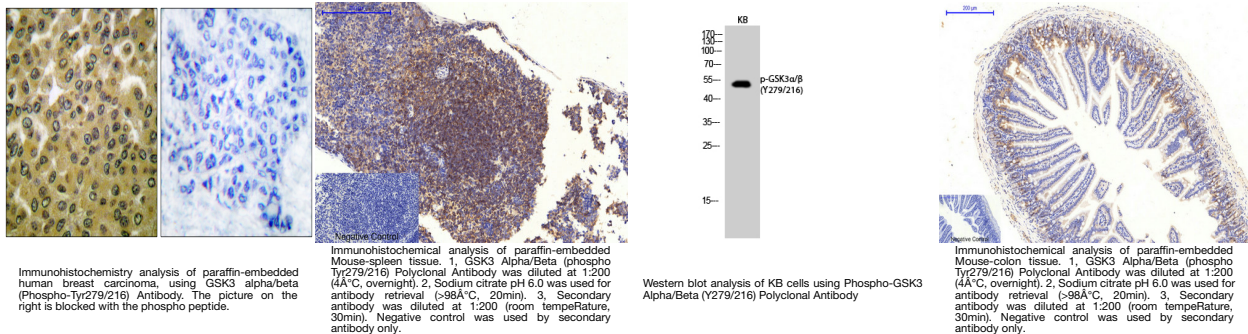
Product Type	Primary antibodies
Short Description	Rabbit polyclonal antibody anti-Phospho-Glycogen synthase kinase-3 alpha and Glycogen synthase kinase-3 beta-Tyr279/216 (246-295 aa) is suitable for use in Immunofluorescence, Western Blot, Immunohistochemistry and ELISA research applications.
Applications	IF/WB/IHC/ELISA
Host/Source	Rabbit
Reactivity	Human/Mouse/Rat

PRODUCT PROPERTIES

Clonality	Polyclonal
Clone ID	
Concentration	1 mg/mL
Conjugation	Unconjugated
Purification	The antibody was affinity-purified from rabbit antiserum by affinity-chromatography using epitope-specific immunogen.
Dilution	IF 1:50-200
Range	WB 1:500-1:2000 IHC 1:100-1:300 ELISA 1:20000
Formulation	Liquid in PBS containing 50% Glycerol, 0.5% BSA and 0.02% Sodium Azide.
Isotype	IgG
Storage Instruction	Store at -20°C for up to 1 year from the date of receipt, and avoid repeat freeze-thaw cycles.

TARGET INFORMATION

Gene ID	2931 2932
Gene Symbol	GSK3A GSK3B
Uniprot ID	GSK3A_HUMAN GSK3B_HUMAN
Immunogen	The antiserum was produced against synthesized peptide derived from the human GSK3 alpha/beta around the phosphorylation site of Tyr279/216 at the amino acid range 246-295
Immunogen Region	246-295 aa
Specificity	Phospho-GSK3 Alpha/Beta (Y279/216) Polyclonal Antibody detects endogenous levels of GSK3 Alpha/Beta protein only when phosphorylated at Y279/216.
Immunogen Sequence	



This product is suitable for in-vitro studies under the RESEARCH USE ONLY [RUO] licence. This product must not be used as for diagnostic or other medical purposes.
St John's Laboratory Ltd, Knowledge Dock Business Centre, University Way, London, E16 2RD | Tel: 0208 223 3081