

Anti-Phospho-FOXO3-Ser253 antibody (220-269 aa) (STJ90275)

STJ90275

GENERAL INFORMATION

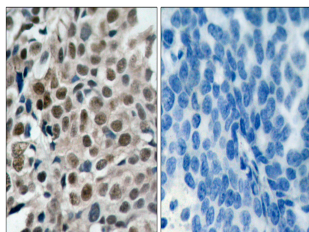
Product Type	Primary antibodies
Short Description	Rabbit polyclonal antibody anti-Phospho-Forkhead box protein O3-Ser253 (220-269 aa) is suitable for use in Western Blot, Immunohistochemistry, Immunofluorescence and ELISA research applications.
Applications	WB/IHC/IF/ELISA
Host/Source	Rabbit
Reactivity	Human/Mouse/Rat/Zebrafish

PRODUCT PROPERTIES

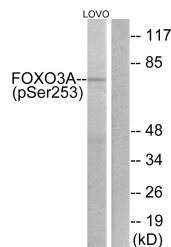
Clonality	Polyclonal
Clone ID	
Concentration	1 mg/mL
Conjugation	Unconjugated
Purification	The antibody was affinity-purified from rabbit antiserum by affinity-chromatography using epitope-specific immunogen.
Dilution Range	WB 1:500-1:2000 IHC 1:100-1:300 IF 1:200-1:1000 ELISA 1:20000
Formulation	Liquid in PBS containing 50% Glycerol, 0.5% BSA and 0.02% Sodium Azide.
Isotype	IgG
Storage Instruction	Store at -20°C for up to 1 year from the date of receipt, and avoid repeat freeze-thaw cycles.

TARGET INFORMATION

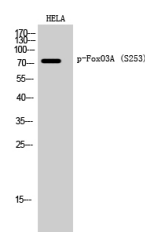
Gene ID	2309
Gene Symbol	FOXO3
Uniprot ID	FOXO3_HUMAN
Immunogen	The antiserum was produced against synthesized peptide derived from the human FKHL1 around the phosphorylation site of Ser253 at the amino acid range 220-269
Immunogen Region	220-269 aa
Specificity	Phospho-FoxO3A (S253) Polyclonal Antibody detects endogenous levels of FoxO3A protein only when phosphorylated at S253.
Immunogen Sequence	



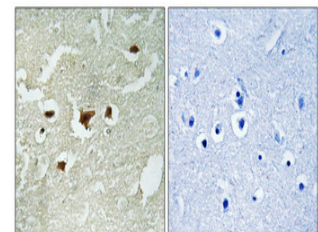
Immunohistochemistry analysis of paraffin-embedded human breast carcinoma, using FKHL1 (Phospho-Ser253) Antibody. The picture on the right is blocked with the phospho peptide.



Western blot analysis of lysates from LOVO cells treated with serum 20% 30', using FKHL1 (Phospho-Ser253) Antibody. The lane on the right is blocked with the phospho peptide.



Western blot analysis of HELA cells using Phospho-FoxO3A (S253) Polyclonal Antibody diluted at 1/1000



Immunohistochemical analysis of paraffin-embedded Human brain. Antibody was diluted at 1:100 (4A°C overnight). High-pressure and temperature Tris-EDTA, pH8.0 was used for antigen retrieval. Negative control (right) obtained from antibody was pre-absorbed by immunogen peptide.

This product is suitable for in-vitro studies under the RESEARCH USE ONLY [RUO] licence. This product must not be used as for diagnostic or other medical purposes.
St John's Laboratory Ltd, Knowledge Dock Business Centre, University Way, London, E16 2RD | Tel: 0208 223 3081