

Anti-Phospho-FOXO1-Ser319 antibody (286-335 aa) (STJ90274)

STJ90274

GENERAL INFORMATION

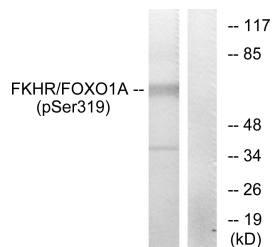
| | |
|--------------------------|--|
| Product Type | Primary antibodies |
| Short Description | Rabbit polyclonal antibody anti-Phospho-Forkhead box protein O1-Ser319 (286-335 aa) is suitable for use in Western Blot, Immunohistochemistry, Immunofluorescence and ELISA research applications. |
| Applications | WB/IHC/IF/ELISA |
| Host/Source | Rabbit |
| Reactivity | Human/Mouse/Rat |

PRODUCT PROPERTIES

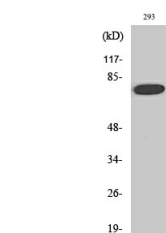
| | |
|----------------------------|---|
| Clonality | Polyclonal |
| Clone ID | |
| Concentration | 1 mg/mL |
| Conjugation | Unconjugated |
| Purification | The antibody was affinity-purified from rabbit antiserum by affinity-chromatography using epitope-specific immunogen. |
| Dilution Range | WB 1:500-1:2000 IHC 1:100-1:300 ELISA 1:10000 IF 1:50-200 |
| Formulation | Liquid in PBS containing 50% Glycerol, 0.5% BSA and 0.02% Sodium Azide. |
| Isotype | IgG |
| Storage Instruction | Store at -20°C for up to 1 year from the date of receipt, and avoid repeat freeze-thaw cycles. |

TARGET INFORMATION

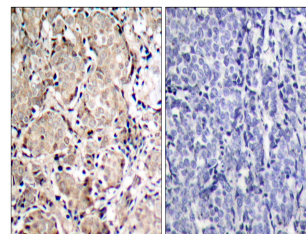
| | |
|---------------------------|--|
| Gene ID | 2308 |
| Gene Symbol | FOXO1 |
| Uniprot ID | FOXO1_HUMAN |
| Immunogen | The antiserum was produced against synthesized peptide derived from the human FKHR around the phosphorylation site of Ser319 at the amino acid range 286-335 |
| Immunogen Region | 286-335 aa |
| Specificity | Phospho-FoxO1 (S319) Polyclonal Antibody detects endogenous levels of FoxO1 protein only when phosphorylated at S319. |
| Immunogen Sequence | |



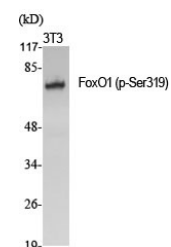
Western blot analysis of lysates from HeLa cells treated with EGF, using FKHR (Phospho-Ser319) Antibody. The lane on the right is blocked with the phospho peptide.



Western blot analysis of 293 cells using Phospho-FoxO1 (S319) Polyclonal Antibody



Immunohistochemistry analysis of paraffin-embedded human breast carcinoma, using FKHR (Phospho-Ser319) Antibody. The picture on the right is blocked with the phospho peptide.



Western blot analysis of various cells using Phospho-FoxO1 (S319) Polyclonal Antibody